

## \$469,700 - 1415 80 Street, Edmonton

MLS® #E4456513

**\$469,700**

4 Bedroom, 2.00 Bathroom, 1,080 sqft

Single Family on 0.00 Acres

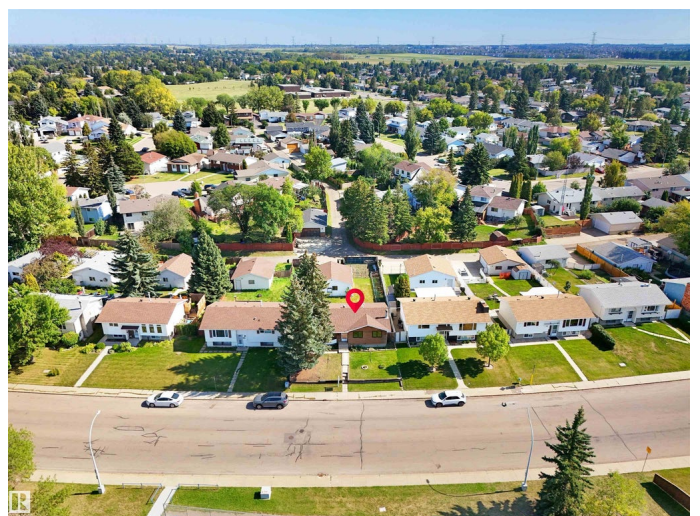
Menisa, Edmonton, AB

This updated bungalow offers new flooring and kitchen with stainless steel appliances. Main floor is fully updated with fresh paint. This home offers a perfect opportunity for first time home buyer/investors. Second kitchen in the basement (Separate Entrance) with one bedroom suite and lots of space for living and dining. Wood Fire place adds the cozy comfort for winters. Shared Laundry in the basement. Close to schools and parks, this home is in an ideal location for families. 54 ftx131 ft lot offers a lot for outdoor space. Updated furnace, Tankless WH and Roof. The double garage has plenty of room for extra parking/Storage. Must See!

Built in 1977

### Essential Information

MLS® #	E4456513
Price	\$469,700
Bedrooms	4
Bathrooms	2.00
Full Baths	2
Square Footage	1,080
Acres	0.00
Year Built	1977
Type	Single Family
Sub-Type	Detached Single Family



Style	Bungalow
Status	Active

### Community Information

Address	1415 80 Street
Area	Edmonton
Subdivision	Menisa
City	Edmonton
County	ALBERTA
Province	AB
Postal Code	T6K 2R3

### Amenities

Amenities	Off Street Parking, On Street Parking, Air Conditioner, Carbon Monoxide Detectors, Hot Water Instant, Hot Water Tankless, Patio, Vinyl Windows
Parking	Double Garage Detached

### Interior

Appliances	Air Conditioning-Central
Heating	Forced Air-1, Natural Gas
Fireplace	Yes
Fireplaces	Direct Vent, Glass Door
Stories	2
Has Suite	Yes
Has Basement	Yes
Basement	Full, Finished

### Exterior

Exterior	Wood, Asphalt
Exterior Features	Back Lane, Fenced, Landscaped, Playground Nearby, Schools, Vegetable Garden
Roof	Asphalt Shingles
Construction	Wood, Asphalt
Foundation	Concrete Perimeter

### School Information

Elementary	Satoo School
Middle	kisÅªwÅ«tisiwin School

### Additional Information

Date Listed September 5th, 2025

Days on Market 1

Zoning Zone 29

DATA IS DEEMED RELIABLE BUT IS NOT GUARANTEED ACCURATE BY THE REALTORS® ASSOCIATION OF EDMONTON. COPYRIGHT 2025 BY THE REALTORS® ASSOCIATION OF EDMONTON. ALL RIGHTS RESERVED. Trademarks are owned or controlled by the Canadian Real Estate Association (CREA) and identify real estate professionals who are members of CREA (REALTOR®, REALTORS®) and/or the quality of services they provide (MLS®, Multiple Listing Service®)

Listing information last updated on September 6th, 2025 at 5:02am MDT