

\$249,000 - 408 5404 7 Avenue, Edmonton

MLS® #E4456241

\$249,000

2 Bedroom, 2.00 Bathroom, 857 sqft

Condo / Townhouse on 0.00 Acres

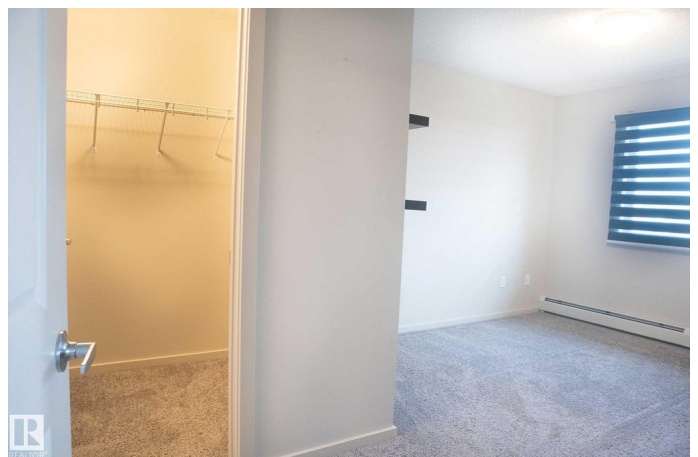
Charlesworth, Edmonton, AB

Top floor Corner Unit with 2 sides Balcony, well maintained in the Desirable Elements At Willowhaven owned by original owner, Upgraded 2 Bedrooms and 2 full Bath, Large Kitchen with St. Steel appliances, Quartz Countertops. Master Bedroom has full ensuite and another 4 pcs. Bath for 2nd Bedroom and guests. It does have its private in-suite laundry. There is Titled Underground Parking for winter weather. you will love the Location, close to shopping, Restaurants, public transportation and easy access to Highway 2 and Anthony henday.

Built in 2018

Essential Information

MLS® #	E4456241
Price	\$249,000
Bedrooms	2
Bathrooms	2.00
Full Baths	2
Square Footage	857
Acres	0.00
Year Built	2018
Type	Condo / Townhouse
Sub-Type	Lowrise Apartment
Style	Single Level Apartment



Status	Active
--------	--------

Community Information

Address	408 5404 7 Avenue
Area	Edmonton
Subdivision	Charlesworth
City	Edmonton
County	ALBERTA
Province	AB
Postal Code	T6X 2K4

Amenities

Amenities	No Animal Home, No Smoking Home, Parking-Visitor, Patio, Secured Parking, Sprinkler System-Fire, Vinyl Windows
Parking	Heated, Parkade, Underground

Interior

Interior Features	ensuite bathroom
Appliances	Dishwasher-Built-In, Dryer, Garage Opener, Oven-Microwave, Refrigerator, Stove-Countertop Electric, Washer, Window Coverings
Heating	Baseboard, Water
# of Stories	4
Stories	1
Has Basement	Yes
Basement	None, No Basement

Exterior

Exterior	Wood, Stone, Vinyl
Exterior Features	Airport Nearby, Golf Nearby, Playground Nearby, Public Transportation, Schools, Shopping Nearby, See Remarks
Roof	Asphalt Shingles
Construction	Wood, Stone, Vinyl
Foundation	Concrete Perimeter

Additional Information

Date Listed	September 5th, 2025
Days on Market	1
Zoning	Zone 53
Condo Fee	\$440

DATA IS DEEMED RELIABLE BUT IS NOT GUARANTEED ACCURATE BY THE REALTORS® ASSOCIATION OF EDMONTON. COPYRIGHT 2025 BY THE REALTORS® ASSOCIATION OF EDMONTON. ALL RIGHTS RESERVED.Trademarks are owned or controlled by the Canadian Real Estate Association (CREA) and identify real estate professionals who are members of CREA (REALTOR®, REALTORS®) and/or the quality of services they provide (MLS®, Multiple Listing Service®)

Listing information last updated on September 6th, 2025 at 1:32am MDT