

# \$324,800 - #28 2922 Maple Way, Edmonton

MLS® #E4456165

**\$324,800**

3 Bedroom, 2.50 Bathroom, 1,327 sqft  
Condo / Townhouse on 0.00 Acres

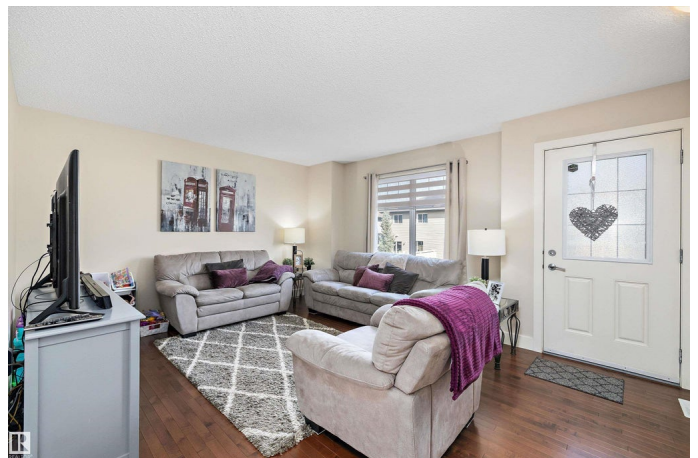
Maple Crest, Edmonton, AB

Your Perfect Townhouse Awaits! Move in tomorrow, a quick possession is available! Stay cool with A/C, enjoy modern finishes & an unbeatable location - just blocks from lakes, shops, schools & parks in a well-maintained condo community. Step inside & be impressed by the bright, spacious layout with big windows & an impressive kitchen with quartz counters, plenty of cabinets & an eating bar at the island overlooking the dining area. A convenient 2-pce bath & laundry is on the main floor. Upstairs you'll find 3 bedrooms, including a dreamy primary suite with a walk-in closet & 4-piece ensuite, plus another full 4-piece bath for the family. You'll love the large double garage to keep the car warm in the winter. Outside, relax or entertain on your private patio - perfect for BBQ nights, summer evenings, or a quiet morning coffee. This home combines style, comfort & convenience. It's the perfect space for families to grow, create memories & enjoy life to the fullest! Don't miss out on this amazing opportunity!

Built in 2015

## Essential Information

MLS® #	E4456165
Price	\$324,800



Bedrooms	3
Bathrooms	2.50
Full Baths	2
Half Baths	1
Square Footage	1,327
Acres	0.00
Year Built	2015
Type	Condo / Townhouse
Sub-Type	Townhouse
Style	3 Storey
Status	Active

### Community Information

Address	#28 2922 Maple Way
Area	Edmonton
Subdivision	Maple Crest
City	Edmonton
County	ALBERTA
Province	AB
Postal Code	T6T 1A5

### Amenities

Amenities	See Remarks
Parking Spaces	2
Parking	Double Garage Attached, Insulated

### Interior

Interior Features	ensuite bathroom
Appliances	Air Conditioning-Central, Dishwasher-Built-In, Dryer, Garage Control, Garage Opener, Microwave Hood Fan, Refrigerator, Stove-Electric, Washer, Window Coverings
Heating	Forced Air-1, Natural Gas
Stories	3
Has Basement	Yes
Basement	Full, Finished

### Exterior

Exterior	Wood, Stone, Vinyl
Exterior Features	Golf Nearby, Playground Nearby, Public Transportation, Schools,

	Shopping Nearby
Roof	Asphalt Shingles
Construction	Wood, Stone, Vinyl
Foundation	Concrete Perimeter

### **Additional Information**

Date Listed	September 3rd, 2025
Days on Market	3
Zoning	Zone 30
Condo Fee	\$140

DATA IS DEEMED RELIABLE BUT IS NOT GUARANTEED ACCURATE BY THE REALTORS® ASSOCIATION OF EDMONTON. COPYRIGHT 2025 BY THE REALTORS® ASSOCIATION OF EDMONTON. ALL RIGHTS RESERVED. Trademarks are owned or controlled by the Canadian Real Estate Association (CREA) and identify real estate professionals who are members of CREA (REALTOR®, REALTORS®) and/or the quality of services they provide (MLS®, Multiple Listing Service®)

Listing information last updated on September 6th, 2025 at 1:32am MDT