

\$899,900 - 70 50450 Rge Road 233, Rural Leduc County

MLS® #E4455843

\$899,900

5 Bedroom, 2.50 Bathroom, 2,122 sqft

Rural on 2.50 Acres

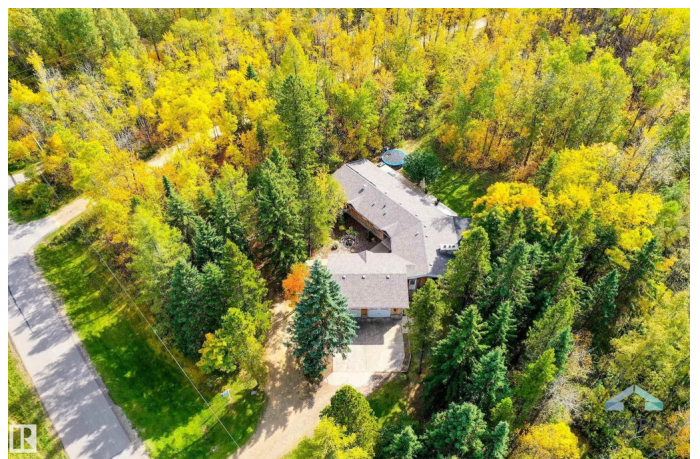
Gateway Estate, Rural Leduc County, AB

What a beautiful acreage. Only minutes from Beaumont, these 2.5 acres are in a subdivision yet offer treed privacy. The 2121 sq.ft bungalow had a complete makeover several years ago & has been transformed into a warm and welcoming home complete with a cold water plunge pool on the deck. The custom kitchen overlooks the spacious living rm and sunken family room with a soothing water feature + wrapped with windows for an abundance of natural light. The large dining room could accommodate a table of ten & is complete with a natural stone f/p. Past the large foyer and down the hall you will find 4 bdrms incl. the master retreat with a 4 pc. ensuite and floor to ceiling sliding doors to your own private south facing deck. The ideas are endless in the finished basement with a studio gym, a true Norwegian sauna with shower, bdrm #5 with it's own walk-in closet, a huge rec rm & great storage space.

Built in 1972

Essential Information

| | |
|------------|-----------|
| MLS® # | E4455843 |
| Price | \$899,900 |
| Bedrooms | 5 |
| Bathrooms | 2.50 |
| Full Baths | 2 |



| | |
|----------------|------------------------|
| Half Baths | 1 |
| Square Footage | 2,122 |
| Acres | 2.50 |
| Year Built | 1972 |
| Type | Rural |
| Sub-Type | Detached Single Family |
| Style | Bungalow |
| Status | Active |

Community Information

| | |
|-------------|-----------------------|
| Address | 70 50450 Rge Road 233 |
| Area | Rural Leduc County |
| Subdivision | Gateway Estate |
| City | Rural Leduc County |
| County | ALBERTA |
| Province | AB |
| Postal Code | T4X 0L4 |

Amenities

| | |
|----------------|--|
| Features | Deck, Exercise Room, Fire Pit, No Smoking Home, Sauna; Swirlpool; Steam, See Remarks |
| Parking Spaces | 8 |

Interior

| | |
|-------------------|---------------------------|
| Interior Features | ensuite bathroom |
| Heating | Forced Air-2, Natural Gas |
| Fireplace | Yes |
| Stories | 2 |
| Has Basement | Yes |
| Basement | Full, Finished |

Exterior

| | |
|-------------------|---|
| Exterior | Wood |
| Exterior Features | Airport Nearby, Backs Onto Park/Trees, Fruit Trees/Shrubs, Golf Nearby, No Through Road, Private Setting, Treed Lot |
| Construction | Wood |
| Foundation | Concrete Perimeter |

Additional Information

Date Listed September 2nd, 2025

Days on Market 3

Zoning Zone 80

DATA IS DEEMED RELIABLE BUT IS NOT GUARANTEED ACCURATE BY THE REALTORS® ASSOCIATION OF EDMONTON. COPYRIGHT 2025 BY THE REALTORS® ASSOCIATION OF EDMONTON. ALL RIGHTS RESERVED. Trademarks are owned or controlled by the Canadian Real Estate Association (CREA) and identify real estate professionals who are members of CREA (REALTOR®, REALTORS®) and/or the quality of services they provide (MLS®, Multiple Listing Service®)

Listing information last updated on September 5th, 2025 at 8:48am MDT