

\$575,000 - 6 27420 Twp Road 540, Rural Parkland County

MLS® #E4455756

\$575,000

5 Bedroom, 2.00 Bathroom, 1,613 sqft

Rural on 3.16 Acres

Grandmuir Estates, Rural Parkland County, AB

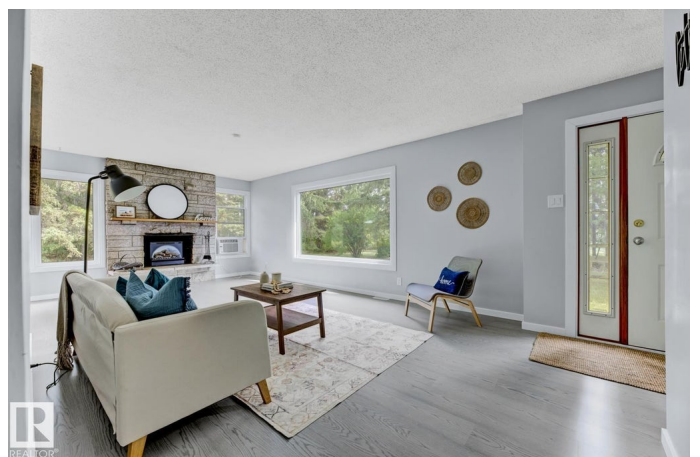
Fantastic location just minutes north of Spruce Grove! This private 3.16-acre property in Grandmuir Estates is beautifully treed and well maintained. Offering 2800 square feet of developed living space. Recent updates include new flooring and fresh paint upstairs. The main level offers 3 bedrooms, a 4-piece bath, and a bright kitchen with oak cabinets and ample counter space. The dining room features a bay window and access to a large deck. The fully finished basement includes a small kitchenette, 2 bedrooms, a spacious family room, and 3-piece bath. A double attached garage with enclosed breezeway (approx. 800 sq ft for garage & storage) provides extra space. A newer large shed offers space for storage or a small workshop. The land is private with fruit trees, garden, and space suitable for horses. Conveniently located with quick access to Muir Lake, just 10 minutes to Spruce Grove, 15 to Stony Plain, and 30 to Edmonton. Discover country living just outside of the city!

Built in 1975

Essential Information

MLS® #

E4455756



Price	\$575,000
Bedrooms	5
Bathrooms	2.00
Full Baths	2
Square Footage	1,613
Acres	3.16
Year Built	1975
Type	Rural
Sub-Type	Detached Single Family
Style	Bungalow
Status	Active

Community Information

Address	6 27420 Twp Road 540
Area	Rural Parkland County
Subdivision	Grandmuir Estates
City	Rural Parkland County
County	ALBERTA
Province	AB
Postal Code	T7X 3S7

Amenities

Features	Deck, Fire Pit, No Smoking Home
Parking Spaces	10

Interior

Heating	Forced Air-1, Natural Gas
Fireplace	Yes
Stories	2
Has Basement	Yes
Basement	Full, Finished

Exterior

Exterior	Wood
Exterior Features	Backs Onto Park/Trees, Flat Site, Level Land, Private Setting, Partially Fenced
Construction	Wood
Foundation	Concrete Perimeter

Additional Information

Date Listed September 3rd, 2025

Days on Market 2

Zoning Zone 70

DATA IS DEEMED RELIABLE BUT IS NOT GUARANTEED ACCURATE BY THE REALTORS® ASSOCIATION OF EDMONTON. COPYRIGHT 2025 BY THE REALTORS® ASSOCIATION OF EDMONTON. ALL RIGHTS RESERVED. Trademarks are owned or controlled by the Canadian Real Estate Association (CREA) and identify real estate professionals who are members of CREA (REALTOR®, REALTORS®) and/or the quality of services they provide (MLS®, Multiple Listing Service®)

Listing information last updated on September 5th, 2025 at 2:03pm MDT