

# **\$1,700,000 - 25 52258 Rge Road 231, Rural Strathcona County**

---

MLS® #E4455619

**\$1,700,000**

4 Bedroom, 4.50 Bathroom, 3,334 sqft

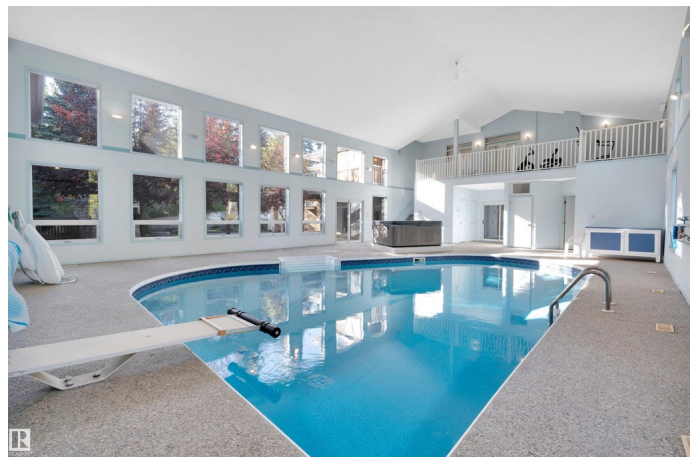
Rural on 2.01 Acres

Windsor Estates, Rural Strathcona County, AB

ENTERTAINERâ€™S DREAM! This incredible 6900+ sqft home with INDOOR POOL sits on a PRIVATE & PICTURESQUE 2.01 acres in prestigious Windsor Estates, minutes to Sherwood Park. Featuring 4 bdrms, 6.5 baths, TRIPLE garage plus a 54x28 SHOP with 1800sqft of additional space, this property truly has it all. A grand entrance welcomes you to the family sized kitchen with an abundance of cabinetry, newer appliances & quartz island overlooking the living rm with fireplace. Updated hardwood flows through the dining area & den (could serve as a main floor bedroom). 3pc bath, 2pc bath & mudroom complete this level. Patio doors lead to your very own indoor pool! The king sized primary suite boasts a private balcony, massive WI closet & spa-like ensuite. 2 more generous bedrooms (one with WIC, one with dual closets), laundry & 4pc bath complete the upper level. The WALKOUT basement impresses with a rec room featuring bar & fireplace, plus access to the patio with built-in BBQ & pool. Too many features in this MUST SEE HOME

Built in 1994

## **Essential Information**



MLS® #	E4455619
Price	\$1,700,000
Bedrooms	4
Bathrooms	4.50
Full Baths	4
Half Baths	1
Square Footage	3,334
Acres	2.01
Year Built	1994
Type	Rural
Sub-Type	Detached Single Family
Style	2 Storey
Status	Active

### Community Information

Address	25 52258 Rge Road 231
Area	Rural Strathcona County
Subdivision	Windsor Estates
City	Rural Strathcona County
County	ALBERTA
Province	AB
Postal Code	T8B 1M8

### Amenities

Features	Air Conditioner, Barbecue-Built-In, Deck, Hot Tub, Parking-Extra, Patio, Pool-Indoor, R.V. Storage, Sauna; Swirlpool; Steam, Sprinkler Sys-Underground, Vinyl Windows, Walkout Basement, Wet Bar, See Remarks
----------	---

### Interior

Interior Features	ensuite bathroom
Heating	Forced Air-1, Natural Gas
Fireplace	Yes
Stories	3
Has Basement	Yes
Basement	Full, Finished

### Exterior

Exterior	Wood
----------	------

Exterior Features	Cul-De-Sac, Landscaped, Private Setting, Schools, Shopping Nearby, Treed Lot, See Remarks
Construction	Wood
Foundation	Concrete Perimeter

**Additional Information**

Date Listed	September 2nd, 2025
Days on Market	3
Zoning	Zone 80

DATA IS DEEMED RELIABLE BUT IS NOT GUARANTEED ACCURATE BY THE REALTORS® ASSOCIATION OF EDMONTON. COPYRIGHT 2025 BY THE REALTORS® ASSOCIATION OF EDMONTON. ALL RIGHTS RESERVED.Trademarks are owned or controlled by the Canadian Real Estate Association (CREA) and identify real estate professionals who are members of CREA (REALTOR®, REALTORS®) and/or the quality of services they provide (MLS®, Multiple Listing Service®)

Listing information last updated on September 5th, 2025 at 8:32am MDT