

# \$519,900 - N/A, Edmonton

MLS® #E4455440

## \$519,900

4 Bedroom, 3.00 Bathroom, 3,412 sqft  
Single Family on 0.00 Acres

Tweddle Place, Edmonton, AB

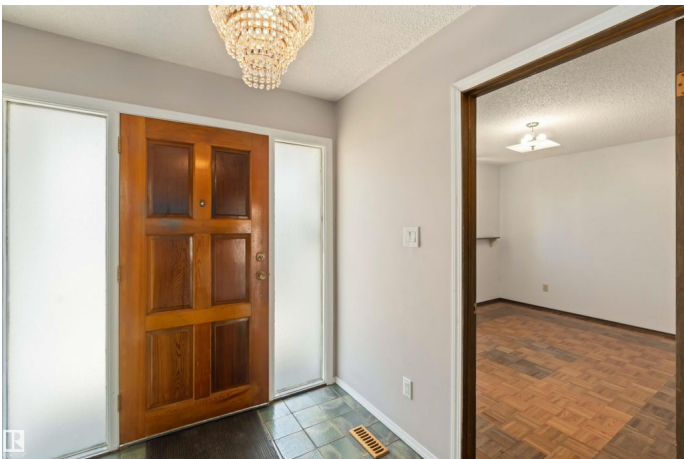
Discover your dream home featuring a spectacular heated 3-car garage perfect for car collectors and DIY enthusiasts. Premium Features Include: â€¢ Expansive Heated 3-car garage with workshop potential â€¢ Skylight flooding spaces with natural light â€¢ Cozy gas fireplace for year-round ambiance â€¢ Bedroom Upstairs comes with Murphy Bed included â€¢ Private sauna for ultimate relaxation with steam capacity â€¢ RV parking pad for adventure seekers â€¢ Convenient main-level laundry â€¢ Entertaining wet bar perfect for hosting â€¢ Covered breezeway connecting home to garage â€¢ Move-in ready

This rare find combines family comfort with serious storage and workspace - ideal for those who appreciate both luxury living and practical functionality.

Built in 1974

### Essential Information

MLS® #	E4455440
Price	\$519,900
Bedrooms	4
Bathrooms	3.00
Full Baths	2
Half Baths	2
Square Footage	3,412
Acres	0.00



Year Built	1974
Type	Single Family
Sub-Type	Detached Single Family
Style	2 Storey
Status	Active

### Community Information

Address	N/A
Area	Edmonton
Subdivision	Tweddle Place
City	Edmonton
County	ALBERTA
Province	AB
Postal Code	T9E 0R7

### Amenities

Amenities	Deck, Wet Bar
Parking Spaces	6
Parking	Triple Garage Attached

### Interior

Interior Features	ensuite bathroom
Appliances	Dishwasher-Built-In, Dryer, Freezer, Garburator, Oven-Microwave, Refrigerator, Stove-Electric, Vacuum System Attachments, Vacuum Systems, Washer
Heating	Forced Air-1, Natural Gas
Fireplace	Yes
Fireplaces	Masonry
Stories	3
Has Basement	Yes
Basement	Full, Finished

### Exterior

Exterior	Wood, Brick, Vinyl
Exterior Features	Corner Lot, Fenced, Fruit Trees/Shrubs, Golf Nearby, Playground Nearby, Schools, Shopping Nearby
Roof	Asphalt Shingles
Construction	Wood, Brick, Vinyl
Foundation	Concrete Perimeter

**School Information**

Elementary	Malcolm Tweddle
Middle	Edith Rogers
High	J. Percy Page

**Additional Information**

Date Listed	August 30th, 2025
Days on Market	2
Zoning	Zone 29

DATA IS DEEMED RELIABLE BUT IS NOT GUARANTEED ACCURATE BY THE REALTORS® ASSOCIATION OF EDMONTON. COPYRIGHT 2025 BY THE REALTORS® ASSOCIATION OF EDMONTON. ALL RIGHTS RESERVED.Trademarks are owned or controlled by the Canadian Real Estate Association (CREA) and identify real estate professionals who are members of CREA (REALTOR®, REALTORS®) and/or the quality of services they provide (MLS®, Multiple Listing Service®)

Listing information last updated on September 1st, 2025 at 5:32am MDT