

\$349,900 - 740 Knottwood Road, Edmonton

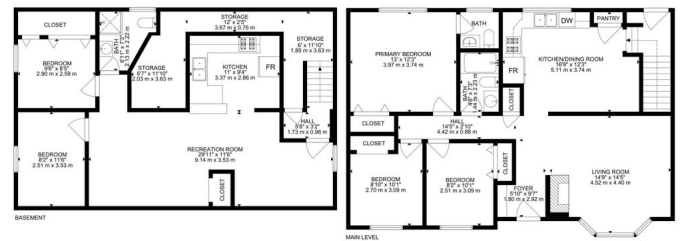
MLS® #E4454316

\$349,900

5 Bedroom, 2.50 Bathroom, 1,087 sqft
Single Family on 0.00 Acres

Satoo, Edmonton, AB

Welcome to this spacious bungalow nestled in the desirable community of Satoo. Situated on a large, fully fenced and landscaped lot. This property offers plenty of room for family living and entertaining. Featuring 5 bedrooms 2 kitchens and 2 living areas. This home is ideal for extended families and investors. The property includes a double detached garage with ample parking. Located within walking distance to schools, parks and playgrounds and close to shopping, public transportation, and all amenities. While the home does require some work it presents a fantastic opportunity to customize in a family friendly neighborhood.



Built in 1975

Essential Information

MLS® #	E4454316
Price	\$349,900
Bedrooms	5
Bathrooms	2.50
Full Baths	2
Half Baths	1
Square Footage	1,087
Acres	0.00
Year Built	1975
Type	Single Family

GROSS INTERNAL AREA
BASEMENT: 860 SQ FT, 18.20' MAIN LEVEL: 1087 SQ FT, 101' 10"
TOTAL: 1947 SQ FT, 193' 10"
SIZE AND DIMENSIONS ARE APPROXIMATE, ACTUAL MAY VARY

Sub-Type	Detached Single Family
Style	Bungalow
Status	Active

Community Information

Address	740 Knottwood Road
Area	Edmonton
Subdivision	Satoo
City	Edmonton
County	ALBERTA
Province	AB
Postal Code	T6K 1W5

Amenities

Amenities	On Street Parking
Parking	Double Garage Detached

Interior

Interior Features	ensuite bathroom
Appliances	See Remarks
Heating	Forced Air-1, Natural Gas
Stories	2
Has Suite	Yes
Has Basement	Yes
Basement	Full, Finished

Exterior

Exterior	Wood, Stucco
Exterior Features	Airport Nearby, Golf Nearby, Playground Nearby, Public Transportation, Schools, Shopping Nearby
Roof	Asphalt Shingles
Construction	Wood, Stucco
Foundation	Concrete Perimeter

Additional Information

Date Listed	August 22nd, 2025
Days on Market	1
Zoning	Zone 29

DATA IS DEEMED RELIABLE BUT IS NOT GUARANTEED ACCURATE BY THE REALTORS® ASSOCIATION OF

EDMONTON. COPYRIGHT 2025 BY THE REALTORS® ASSOCIATION OF EDMONTON. ALL RIGHTS RESERVED.Trademarks are owned or controlled by the Canadian Real Estate Association (CREA) and identify real estate professionals who are members of CREA (REALTOR®, REALTORS®) and/or the quality of services they provide (MLS®, Multiple Listing Service®)

Listing information last updated on August 23rd, 2025 at 8:17am MDT