

## \$520,000 - 27 Halden Crescent, Spruce Grove

MLS® #E4454260

**\$520,000**

3 Bedroom, 2.50 Bathroom, 1,098 sqft

Single Family on 0.00 Acres

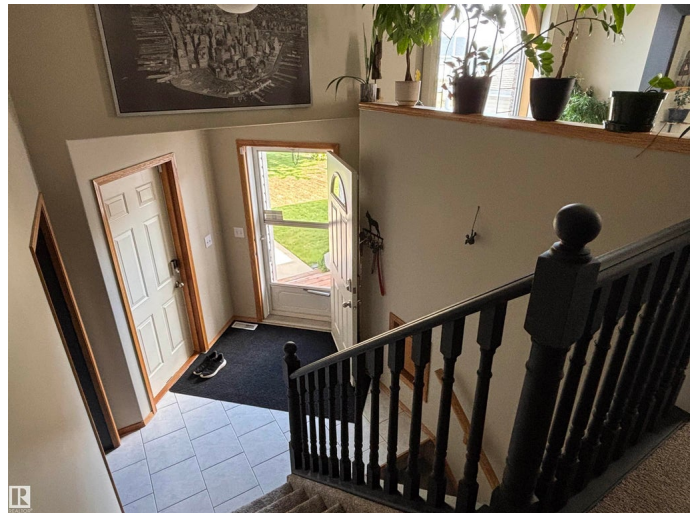
Hilldowns, Spruce Grove, AB

Choice location backing on a Creek, Park, Playground, Soccer Field, Basketball Court and Walking Trails. In winter there is a skating oval as well. This impressive 3 Bedroom & 3 Bathroom Bilevel is fully finished on both levels. The open plan basement features large windows, fireplace & wet bar. Central Air Conditioning for the summer and a Fireplace for the winter! The garage is a double. The west facing back yard features a raised and covered deck and a multi purpose 12' x 8' Gazebo for you to enjoy. This turn key beauty awaits your arrival.

Built in 1996

### Essential Information

MLS® #	E4454260
Price	\$520,000
Bedrooms	3
Bathrooms	2.50
Full Baths	2
Half Baths	1
Square Footage	1,098
Acres	0.00
Year Built	1996
Type	Single Family
Sub-Type	Detached Single Family
Style	Bi-Level



Status Active

### Community Information

Address 27 Halden Crescent  
Area Spruce Grove  
Subdivision Hilldowns  
City Spruce Grove  
County ALBERTA  
Province AB  
Postal Code T7X 2V6

### Amenities

Amenities Deck, Exterior Walls- 2"x6", Gazebo  
Parking Spaces 4  
Parking Double Garage Attached  
Is Waterfront Yes

### Interior

Interior Features ensuite bathroom  
Appliances Air Conditioning-Central, Dishwasher-Built-In, Dryer, Garage Opener, Refrigerator, Stove-Electric, Vacuum Systems, Washer, Window Coverings  
Heating Forced Air-1, Natural Gas  
Fireplace Yes  
Fireplaces Glass Door  
Stories 2  
Has Basement Yes  
Basement Full, Finished

### Exterior

Exterior Wood, Brick, Vinyl  
Exterior Features Backs Onto Park/Trees, Creek, Fenced, Landscaped, No Back Lane, No Through Road, Playground Nearby, Private Setting, Public Transportation, Schools, Shopping Nearby, See Remarks  
Roof Asphalt Shingles  
Construction Wood, Brick, Vinyl  
Foundation Concrete Perimeter

### Additional Information

Date Listed August 20th, 2025

Days on Market 3

Zoning Zone 91

DATA IS DEEMED RELIABLE BUT IS NOT GUARANTEED ACCURATE BY THE REALTORS® ASSOCIATION OF EDMONTON. COPYRIGHT 2025 BY THE REALTORS® ASSOCIATION OF EDMONTON. ALL RIGHTS RESERVED. Trademarks are owned or controlled by the Canadian Real Estate Association (CREA) and identify real estate professionals who are members of CREA (REALTOR®, REALTORS®) and/or the quality of services they provide (MLS®, Multiple Listing Service®)

Listing information last updated on August 23rd, 2025 at 2:02pm MDT