

## \$249,900 - 102 5816 Mullen Place, Edmonton

MLS® #E4454224

**\$249,900**

2 Bedroom, 2.00 Bathroom, 966 sqft

Condo / Townhouse on 0.00 Acres

MacTaggart, Edmonton, AB

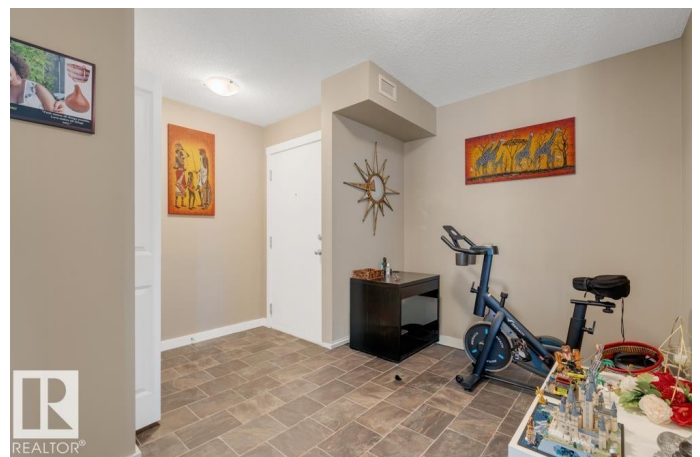
CORNER UNIT in the highly desirable community of MacTaggart! This spacious 2 BED, 2 BATH condo offers nearly 1,000 SQFT of well-designed living space and comes with the rare bonus of 1 TITLED HEATED UNDERGROUND stall plus 2 ASSIGNED SURFACE stalls. The open layout features a BRIGHT living room with large windows, a functional kitchen with modern finishes, and a dining space that's perfect for entertaining. The primary suite includes a WALK-IN CLOSET and 4PC ENSUITE, while the second bedroom and full bath are ideal for guests, family, or a home office. A versatile DEN adds extra space for an office, reading nook, or hobby room. In-suite LAUNDRY adds convenience. Being a CORNER UNIT, you'll love the extra natural light and sense of privacy. Located steps from MacTaggart's trails, ponds, and green spaces, with easy access to Windermere shopping, restaurants, schools, the Henday, and Terwillegar Rec Centre. A fantastic home in a welcoming, well-connected community!

Built in 2016

### Essential Information

MLS® # E4454224

Price \$249,900



Bedrooms	2
Bathrooms	2.00
Full Baths	2
Square Footage	966
Acres	0.00
Year Built	2016
Type	Condo / Townhouse
Sub-Type	Lowrise Apartment
Style	Single Level Apartment
Status	Active

### Community Information

Address	102 5816 Mullen Place
Area	Edmonton
Subdivision	MacTaggart
City	Edmonton
County	ALBERTA
Province	AB
Postal Code	T6R 0W3

### Amenities

Amenities	Exercise Room, Parking-Visitor
Parking	Heated, Stall, Underground, See Remarks

### Interior

Interior Features	ensuite bathroom
Appliances	Dishwasher-Built-In, Dryer, Refrigerator, Stove-Electric, Washer
Heating	Baseboard, Electric
# of Stories	4
Stories	1
Has Basement	Yes
Basement	None, No Basement

### Exterior

Exterior	Wood, Stone, Vinyl
Exterior Features	Playground Nearby, Public Transportation, Schools, Shopping Nearby
Roof	Asphalt Shingles
Construction	Wood, Stone, Vinyl
Foundation	Concrete Perimeter

**Additional Information**

Date Listed	August 22nd, 2025
Days on Market	1
Zoning	Zone 14
Condo Fee	\$495

DATA IS DEEMED RELIABLE BUT IS NOT GUARANTEED ACCURATE BY THE REALTORS® ASSOCIATION OF EDMONTON. COPYRIGHT 2025 BY THE REALTORS® ASSOCIATION OF EDMONTON. ALL RIGHTS RESERVED.Trademarks are owned or controlled by the Canadian Real Estate Association (CREA) and identify real estate professionals who are members of CREA (REALTOR®, REALTORS®) and/or the quality of services they provide (MLS®, Multiple Listing Service®)

Listing information last updated on August 23rd, 2025 at 1:47pm MDT