

## \$899,900 - 908 Wood Place, Edmonton

MLS® #E4454201

**\$899,900**

3 Bedroom, 2.50 Bathroom, 1,690 sqft

Single Family on 0.00 Acres

Windermere, Edmonton, AB

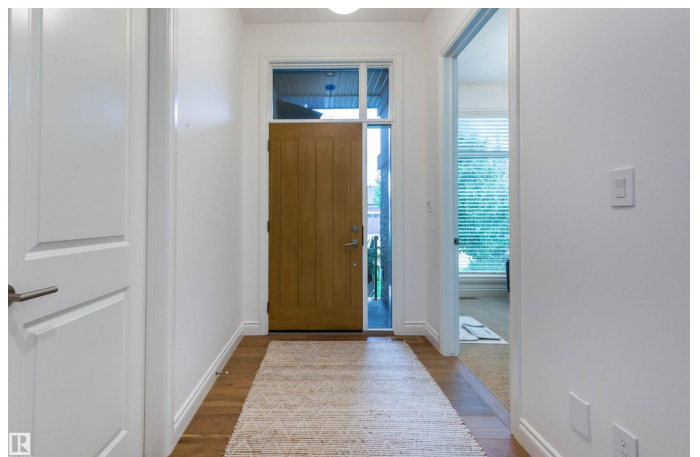
Welcome to the Cascades of One at Windermere! This spectacular south-backing Ace Lange duplex bungalow (Legacy floor plan) has been extensively upgraded by the current owners since their purchase. The chef's kitchen now boasts a professional Fulgor Milano gas range with dual oven, Sub-Zero refrigerator/freezer, redesigned walk-in pantry, and enhanced cabinetry for both style and function. Further updates include fresh paint throughout, Sonos integrated sound system, striking Vivid lighting fixtures, basement storage improvements, and a heated garage with custom shelving. The splendid primary suite highlights a massive walk-through closet with direct access to the upper laundry. Step onto the zero-maintenance composite terrace to enjoy your fabulously landscaped, south-facing yard. Built solid with 6-inch concrete block separation, and soaring 10-ft ceilings. HOA for snow and lawn. This home blends elegance with peace of mind. Prime location—walking distance to ravine trails, golf, dining, and shopping.

Built in 2016

### Essential Information

MLS® # E4454201

Price \$899,900



Bedrooms	3
Bathrooms	2.50
Full Baths	2
Half Baths	1
Square Footage	1,690
Acres	0.00
Year Built	2016
Type	Single Family
Sub-Type	Half Duplex
Style	Bungalow
Status	Active

### Community Information

Address	908 Wood Place
Area	Edmonton
Subdivision	Windermere
City	Edmonton
County	ALBERTA
Province	AB
Postal Code	T6W 3G8

### Amenities

Amenities	Air Conditioner, Ceiling 10 ft., Deck, No Animal Home, No Smoking Home, Smart/Program. Thermostat, HRV System, Natural Gas BBQ Hookup
Parking Spaces	4
Parking	Double Garage Attached

### Interior

Interior Features	ensuite bathroom
Appliances	Air Conditioning-Central, Dishwasher-Built-In, Dryer, Garage Control, Garburator, Hood Fan, Oven-Microwave, Stove-Countertop Gas, Vacuum Systems, Washer, Window Coverings, Wine/Beverage Cooler, Refrigerators-Two, Oven Built-In-Two, Garage Heater
Heating	Forced Air-1, Natural Gas
Fireplace	Yes
Fireplaces	Mantel
Stories	2
Has Basement	Yes

Basement	Full, Finished
----------	----------------

## Exterior

Exterior	Wood, Stone, Stucco
----------	---------------------

Exterior Features	Cul-De-Sac, Golf Nearby, Landscaped, Level Land, No Through Road, Picnic Area, Playground Nearby, Public Transportation, Shopping Nearby
-------------------	--

Roof	Asphalt Shingles
------	------------------

Construction	Wood, Stone, Stucco
--------------	---------------------

Foundation	Concrete Perimeter
------------	--------------------

## School Information

Elementary	Constable Daniel Woodall
------------	--------------------------

Middle	Constable Daniel Woodall
--------	--------------------------

High	Lillian Osborne
------	-----------------

## Additional Information

Date Listed	August 22nd, 2025
-------------	-------------------

Days on Market	1
----------------	---

Zoning	Zone 56
--------	---------

HOA Fees	2070.5
----------	--------

HOA Fees Freq.	Annually
----------------	----------

DATA IS DEEMED RELIABLE BUT IS NOT GUARANTEED ACCURATE BY THE REALTORS® ASSOCIATION OF EDMONTON. COPYRIGHT 2025 BY THE REALTORS® ASSOCIATION OF EDMONTON. ALL RIGHTS RESERVED. Trademarks are owned or controlled by the Canadian Real Estate Association (CREA) and identify real estate professionals who are members of CREA (REALTOR®, REALTORS®) and/or the quality of services they provide (MLS®, Multiple Listing Service®)

Listing information last updated on August 23rd, 2025 at 9:31am MDT