

## **\$369,900 - 27 18230 104a Street, Edmonton**

MLS® #E4454018

**\$369,900**

3 Bedroom, 2.50 Bathroom, 1,484 sqft  
Condo / Townhouse on 0.00 Acres

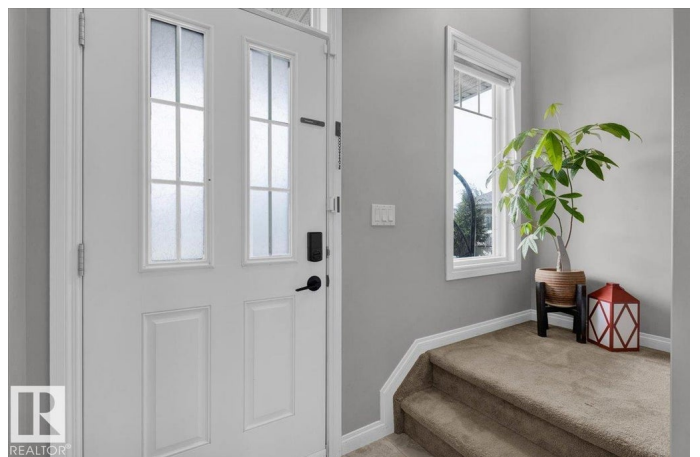
Elsinore, Edmonton, AB

Welcome Home! Family ready 3 Bedroom 2.5 Bathroom Single Garage affordable living in North Elsinore Edmonton. Quiet community and well taken care of property welcomes you home. End unit property with single attached garage and private setting with rear deck. Terrific location close to everything, complex has friendly feeling and visitor parking. Fully finished 2 storey with plenty of upgrades. Main entrance leads to half bathroom and open concept floor plan. Hardwood Floors. Large kitchen with island, updated appliances, pantry, granite countertops, gas range, and plenty of cabinet. Over looks living room and large dining area. Leads to rear of home and back deck with no rear neighbours. Fully finished basement with huge rec room providing plenty of extra space. Top floor has small flex space perfect for home office or a ideal spot for treadmill, bike, or space to do laundry. Upper floor laundry. 3 Upper bedrooms 2 full bath Oversized master bedroom with large closet, ensuite bathroom. Great property!

Built in 2015

### **Essential Information**

MLS® #	E4454018
Price	\$369,900



Bedrooms	3
Bathrooms	2.50
Full Baths	2
Half Baths	1
Square Footage	1,484
Acres	0.00
Year Built	2015
Type	Condo / Townhouse
Sub-Type	Townhouse
Style	2 Storey
Status	Active

### Community Information

Address	27 18230 104a Street
Area	Edmonton
Subdivision	Elsinore
City	Edmonton
County	ALBERTA
Province	AB
Postal Code	T5X 0G9

### Amenities

Amenities	Deck, See Remarks
Parking Spaces	2
Parking	Single Garage Attached

### Interior

Interior Features	ensuite bathroom
Appliances	Dishwasher-Built-In, Dryer, Garage Opener, Hood Fan, Refrigerator, Stove-Gas, Washer, Window Coverings
Heating	Forced Air-1, Natural Gas
Stories	2
Has Basement	Yes
Basement	Full, Finished

### Exterior

Exterior	Wood, Vinyl
Exterior Features	Schools, Shopping Nearby, See Remarks
Roof	Asphalt Shingles

Construction	Wood, Vinyl
Foundation	Concrete Perimeter

**Additional Information**

Date Listed	August 21st, 2025
Days on Market	2
Zoning	Zone 27
Condo Fee	\$309

DATA IS DEEMED RELIABLE BUT IS NOT GUARANTEED ACCURATE BY THE REALTORS® ASSOCIATION OF EDMONTON. COPYRIGHT 2025 BY THE REALTORS® ASSOCIATION OF EDMONTON. ALL RIGHTS RESERVED.Trademarks are owned or controlled by the Canadian Real Estate Association (CREA) and identify real estate professionals who are members of CREA (REALTOR®, REALTORS®) and/or the quality of services they provide (MLS®, Multiple Listing Service®)

Listing information last updated on August 23rd, 2025 at 3:47pm MDT