

# \$4,799,990 - 10512 Atim Road, Rural Parkland County

MLS® #E4449926

**\$4,799,990**

0 Bedroom, 0.00 Bathroom,  
Rural on 102.00 Acres

Acheson, Rural Parkland County, AB

PRIME INVESTMENT OPPORTUNITY! 160  
acres located directly on Highway 16A, just  
outside of Spruce Grove.

## Essential Information

MLS® #	E4449926
Price	\$4,799,990
Bathrooms	0.00
Acres	102.00
Type	Rural
Sub-Type	Vacant Lot/Land
Status	Active

## Community Information

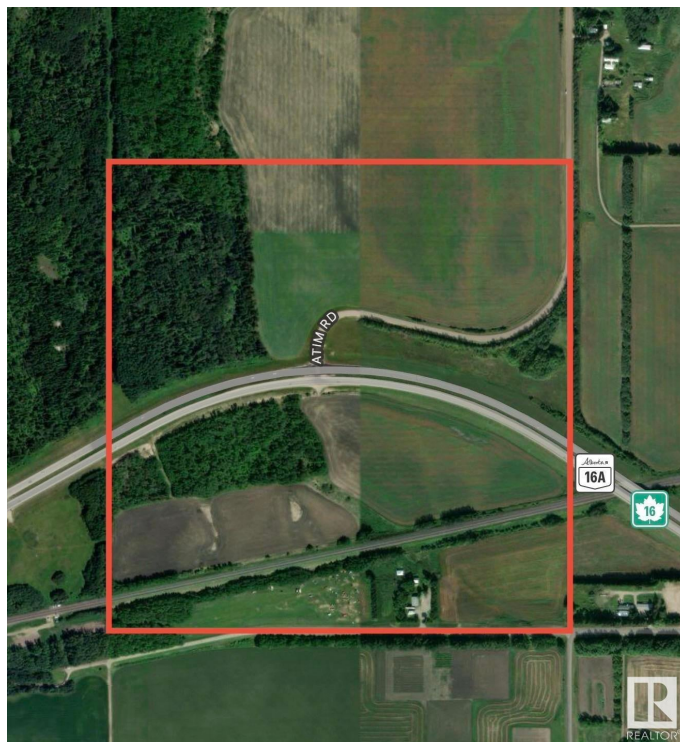
Address	10512 Atim Road
Area	Rural Parkland County
Subdivision	Acheson
City	Rural Parkland County
County	ALBERTA
Province	AB
Postal Code	T7X 6L9

## Exterior

Exterior Features See Remarks

## Additional Information

Date Listed July 26th, 2025



Days on Market	5
Zoning	Zone 70

DATA IS DEEMED RELIABLE BUT IS NOT GUARANTEED ACCURATE BY THE REALTORS® ASSOCIATION OF EDMONTON. COPYRIGHT 2025 BY THE REALTORS® ASSOCIATION OF EDMONTON. ALL RIGHTS RESERVED.Trademarks are owned or controlled by the Canadian Real Estate Association (CREA) and identify real estate professionals who are members of CREA (REALTOR®, REALTORS®) and/or the quality of services they provide (MLS®, Multiple Listing Service®)

Listing information last updated on July 31st, 2025 at 8:02am MDT