

\$390,000 - 13220 95 Street, Edmonton

MLS® #E4447416

\$390,000

5 Bedroom, 2.50 Bathroom, 1,411 sqft

Single Family on 0.00 Acres

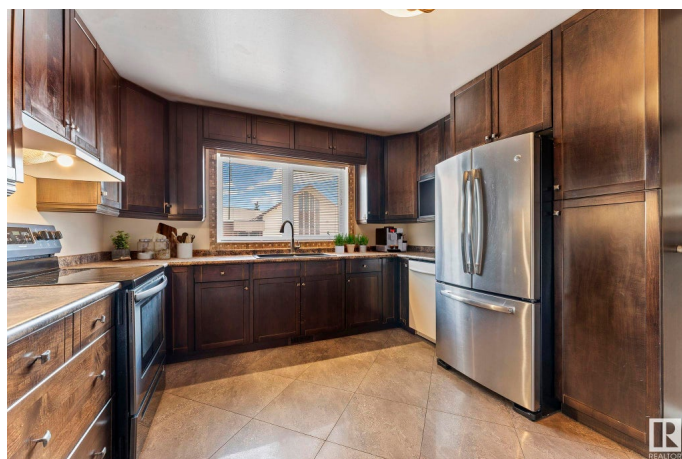
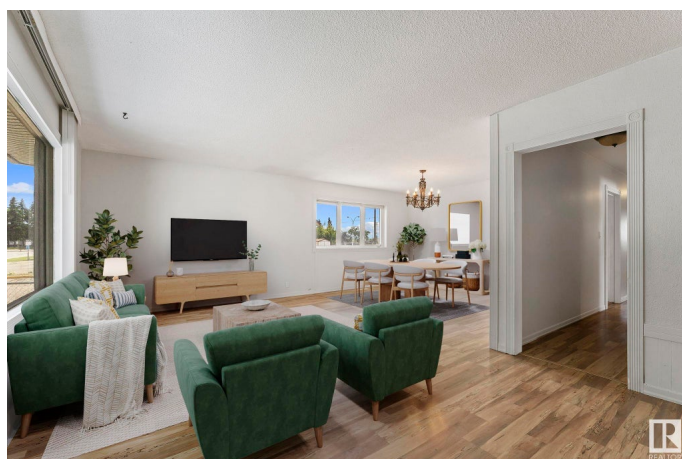
Glengarry, Edmonton, AB

Beautifully updated 1,430 sq. ft. bungalow offering 5 bedrooms and 2.5 baths. The main floor features a bright layout with a spacious kitchen, ample cabinetry, a cozy breakfast/homework nook, and a sun-filled living room and dining area. The primary bedroom includes a 2-piece ensuite, with two additional bedrooms and a full bath completing the level. The basement suite includes two additional bedrooms, a spacious kitchen, laundry, and a large living room. Recent upgrades exceeding \$20,000 include dual high-efficiency furnaces, a new roof and eavestroughs, brand-new basement flooring and ceiling. Exterior doors, window trims, and the front deck have all been freshly painted, along with newer window coverings throughout. Outside, enjoy a large fenced backyard and a welcoming front deck—ideal for relaxing or entertaining. Conveniently located near public transit, schools, and shopping.

Built in 1967

Essential Information

MLS® #	E4447416
Price	\$390,000
Bedrooms	5
Bathrooms	2.50



Full Baths	2
Half Baths	1
Square Footage	1,411
Acres	0.00
Year Built	1967
Type	Single Family
Sub-Type	Detached Single Family
Style	Bungalow
Status	Active

Community Information

Address	13220 95 Street
Area	Edmonton
Subdivision	Glengarry
City	Edmonton
County	ALBERTA
Province	AB
Postal Code	T5E 3Y4

Amenities

Amenities	Closet Organizers, Front Porch
Parking	Insulated, Over Sized, Single Garage Attached

Interior

Interior Features	ensuite bathroom
Appliances	Dishwasher-Built-In, Dryer, Garage Control, Garage Opener, Hood Fan, Refrigerator, Stove-Electric, Washer, Refrigerators-Two, Stoves-Two, Microwave Hood Fan-Two
Heating	Forced Air-1, Forced Air-2, Natural Gas
Stories	2
Has Suite	Yes
Has Basement	Yes
Basement	Full, Finished

Exterior

Exterior	Wood, Vinyl
Exterior Features	Landscaped, No Back Lane, Picnic Area, Public Swimming Pool, Public Transportation, Schools, Shopping Nearby
Roof	Asphalt Shingles

Construction	Wood, Vinyl
Foundation	Concrete Perimeter

School Information

Elementary	St. Matthew, Glengarry
Middle	Killarney, St. Cecilia
High	Queen Elizabeth, Oâ€™leary

Additional Information

Date Listed	July 11th, 2025
Days on Market	2
Zoning	Zone 02

DATA IS DEEMED RELIABLE BUT IS NOT GUARANTEED ACCURATE BY THE REALTORS® ASSOCIATION OF EDMONTON. COPYRIGHT 2025 BY THE REALTORS® ASSOCIATION OF EDMONTON. ALL RIGHTS RESERVED.Trademarks are owned or controlled by the Canadian Real Estate Association (CREA) and identify real estate professionals who are members of CREA (REALTOR®, REALTORS®) and/or the quality of services they provide (MLS®, Multiple Listing Service®)

Listing information last updated on July 12th, 2025 at 11:02pm MDT