

\$714,900 - 21 Kirklees Place, Sherwood Park

MLS® #E4446720

\$714,900

5 Bedroom, 3.50 Bathroom, 2,530 sqft

Single Family on 0.00 Acres

Nottingham, Sherwood Park, AB

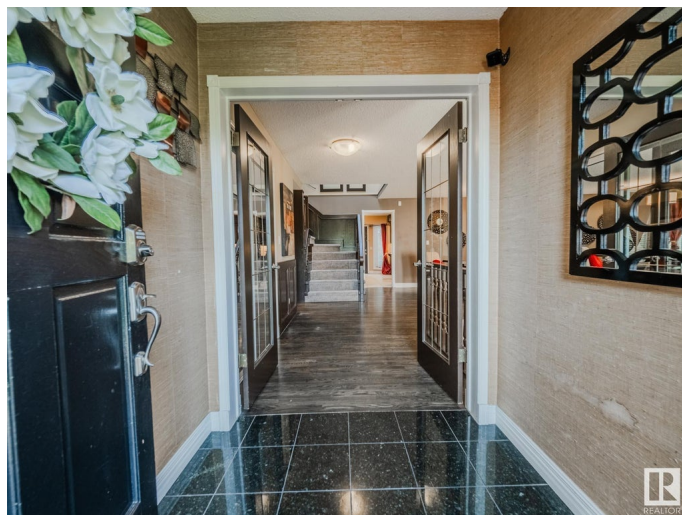
Welcome to this stunning 2-storey home located in the prestigious neighbourhood of Nottingham! 2,529 sqft of beautifully finished living space, this home features **HARDWOOD** and **TILE** throughout the main floor. The open concept kitchen is a chef's dream with **GRANITE** countertops, **STAINLESS STEEL APPLIANCES**, and flows seamlessly into the cozy living room w/ a **WOOD-BURNING FIREPLACE**. There's also a formal dining room, 2pc bath, and a versatile bedroom/office on the main. Upstairs you'll find 3 spacious bedrooms, including a luxurious primary suite with a spa-like 5pc ensuite featuring a **JACUZZI**, plus an additional 3pc bath. The huge basement rec room, 5th bedroom with massive walk-in closet, and another 3pc bath add incredible space for family living. Step outside to your backyard oasis with **MAGAZINE-WORTHY LANDSCAPING**, a **FIRE-PIT** with gazebo, and total privacy. 26x24 **HEATED GARAGE** is currently set up as an office (easy to remove) **TRAILER PARKING**, and new architectural shingles (2023) complete this dream home!

Built in 1986

Essential Information

MLS® # E4446720

Price \$714,900



Bedrooms	5
Bathrooms	3.50
Full Baths	3
Half Baths	1
Square Footage	2,530
Acres	0.00
Year Built	1986
Type	Single Family
Sub-Type	Detached Single Family
Style	2 Storey
Status	Active

Community Information

Address	21 Kirklees Place
Area	Sherwood Park
Subdivision	Nottingham
City	Sherwood Park
County	ALBERTA
Province	AB
Postal Code	T8A 5H2

Amenities

Amenities	Air Conditioner, Closet Organizers, Deck, Fire Pit, Gazebo, No Animal Home, No Smoking Home
Parking	Double Garage Attached

Interior

Interior Features	ensuite bathroom
Appliances	Air Conditioning-Central, Dishwasher-Built-In, Dryer, Hood Fan, Oven-Built-In, Oven-Microwave, Refrigerator, Storage Shed, Stove-Countertop Electric, Washer, Window Coverings
Heating	Forced Air-2, Natural Gas
Fireplace	Yes
Fireplaces	Tile Surround
Stories	3
Has Basement	Yes
Basement	Full, Finished

Exterior

Exterior	Wood, Brick, Vinyl
Exterior Features	Fenced, Fruit Trees/Shrubs, Landscaped, Playground Nearby, Public Transportation, Schools, Shopping Nearby
Roof	Asphalt Shingles
Construction	Wood, Brick, Vinyl
Foundation	Concrete Perimeter

School Information

Elementary	Wes Hosford Elementary
Middle	F.R. Haythorne Junior High
High	Bev Facey Community High

Additional Information

Date Listed	July 9th, 2025
Days on Market	6
Zoning	Zone 25

DATA IS DEEMED RELIABLE BUT IS NOT GUARANTEED ACCURATE BY THE REALTORS® ASSOCIATION OF EDMONTON. COPYRIGHT 2025 BY THE REALTORS® ASSOCIATION OF EDMONTON. ALL RIGHTS RESERVED. Trademarks are owned or controlled by the Canadian Real Estate Association (CREA) and identify real estate professionals who are members of CREA (REALTOR®, REALTORS®) and/or the quality of services they provide (MLS®, Multiple Listing Service®)

Listing information last updated on July 15th, 2025 at 7:17am MDT