

## \$235,900 - 433 148 Ebbers Boulevard, Edmonton

MLS® #E4446242

**\$235,900**

2 Bedroom, 2.00 Bathroom, 841 sqft

Condo / Townhouse on 0.00 Acres

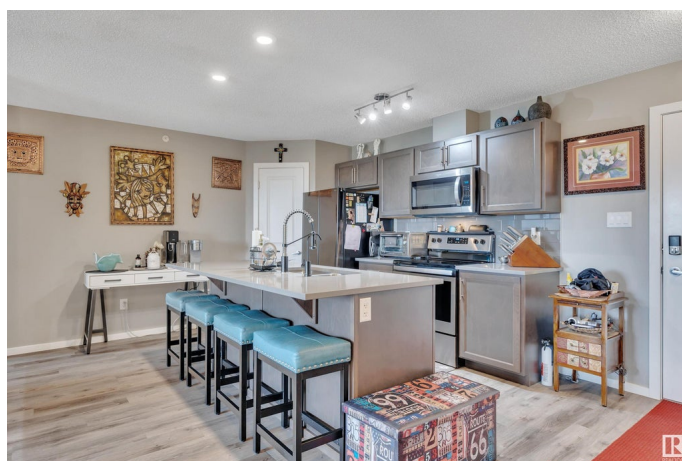
Ebbers, Edmonton, AB

Welcome to the Elements at Manning! This top-floor, 2 bed, 2 bath condo offers an open layout with a modern kitchen featuring stainless steel appliances, quartz counters, and a spacious pantry. The living room leads to a private covered balcony with views of green space and walking trails. The primary bedroom has a walk-through closet and 4pc ensuite, while the second bedroom is perfect for guests or a home office. Enjoy in-suite laundry, underground titled parking, and an extra surface stall. Located in a vibrant, growing community close to Clareview Rec Centre, Manning Town Centre, LRT, and major routes. Parks, trails, and a playground are just steps away for your active lifestyle. A great fit for first-time buyers, investors, or those looking to downsize while enjoying comfort and convenience in a well-maintained building. Move-in ready and waiting for you!

Built in 2018

### Essential Information

MLS® #	E4446242
Price	\$235,900
Bedrooms	2
Bathrooms	2.00
Full Baths	2
Square Footage	841



Acres	0.00
Year Built	2018
Type	Condo / Townhouse
Sub-Type	Lowrise Apartment
Style	Single Level Apartment
Status	Active

### **Community Information**

Address	433 148 Ebbers Boulevard
Area	Edmonton
Subdivision	Ebbers
City	Edmonton
County	ALBERTA
Province	AB
Postal Code	T5Y 4A4

### **Amenities**

Amenities	Deck, No Smoking Home, Parking-Visitor, Security Door, Sprinkler System-Fire
Parking Spaces	2
Parking	Heated, Stall, Underground

### **Interior**

Interior Features	ensuite bathroom
Appliances	Appliances Negotiable, Dishwasher-Built-In, Dryer, Refrigerator-Energy Star, Stove-Electric, Washer, See Remarks
Heating	Hot Water, Natural Gas
# of Stories	4
Stories	4
Has Basement	Yes
Basement	None, No Basement

### **Exterior**

Exterior	Wood, Vinyl
Exterior Features	Golf Nearby, Park/Reserve, Playground Nearby, Public Transportation, Shopping Nearby
Roof	Asphalt Shingles
Construction	Wood, Vinyl
Foundation	Concrete Perimeter

**Additional Information**

Date Listed	July 7th, 2025
Days on Market	5
Zoning	Zone 02
Condo Fee	\$488

DATA IS DEEMED RELIABLE BUT IS NOT GUARANTEED ACCURATE BY THE REALTORS® ASSOCIATION OF EDMONTON. COPYRIGHT 2025 BY THE REALTORS® ASSOCIATION OF EDMONTON. ALL RIGHTS RESERVED.Trademarks are owned or controlled by the Canadian Real Estate Association (CREA) and identify real estate professionals who are members of CREA (REALTOR®, REALTORS®) and/or the quality of services they provide (MLS®, Multiple Listing Service®)

Listing information last updated on July 12th, 2025 at 3:47pm MDT