

\$445,000 - 5316 129 Avenue, Edmonton

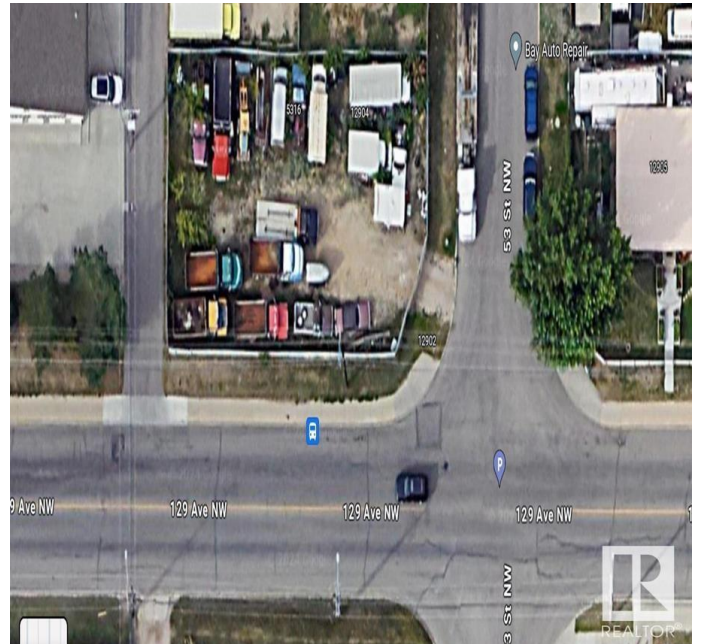
MLS® #E4445311

\$445,000

0 Bedroom, 0.00 Bathroom,
Single Family on 0.00 Acres

Kennedale Industrial, Edmonton, AB

Corner Lot Location, "2" lots side by side suite for a development with the flexibility to accommodate various multi style residential with/or commercial projects. Engage and explore...possibilities are endless. Many options for use = multi family residential units with a commercial retail building, business offices, retail, shops, convenience store, cafe or pub upon with City of Edmonton zoning change approval. Present zoning 'BE'. The lots are located to take advantage of all transportation corridors= the Fort Road Community Shops District and LRT Station; close to 50 Street and 137 Street Communities.



Essential Information

MLS® #	E4445311
Price	\$445,000
Bathrooms	0.00
Acres	0.00
Type	Single Family
Sub-Type	Vacant Lot/Land
Status	Active

Community Information

Address	5316 129 Avenue
Area	Edmonton

Subdivision	Kennedale Industrial
City	Edmonton
County	ALBERTA
Province	AB
Postal Code	T5A 0A3

Exterior

Exterior Features Back Lane, Commercial, Corner Lot, Paved Lane

Additional Information

Date Listed July 1st, 2025

Days on Market 126

Zoning Zone 06

DATA IS DEEMED RELIABLE BUT IS NOT GUARANTEED ACCURATE BY THE REALTORS® ASSOCIATION OF EDMONTON. COPYRIGHT 2025 BY THE REALTORS® ASSOCIATION OF EDMONTON. ALL RIGHTS RESERVED. Trademarks are owned or controlled by the Canadian Real Estate Association (CREA) and identify real estate professionals who are members of CREA (REALTOR®, REALTORS®) and/or the quality of services they provide (MLS®, Multiple Listing Service®)

Listing information last updated on November 4th, 2025 at 9:32am MST