

\$355,000 - 27 7289 South Terwillegar Drive, Edmonton

MLS® #E4444816

\$355,000

3 Bedroom, 2.50 Bathroom, 1,337 sqft
Condo / Townhouse on 0.00 Acres

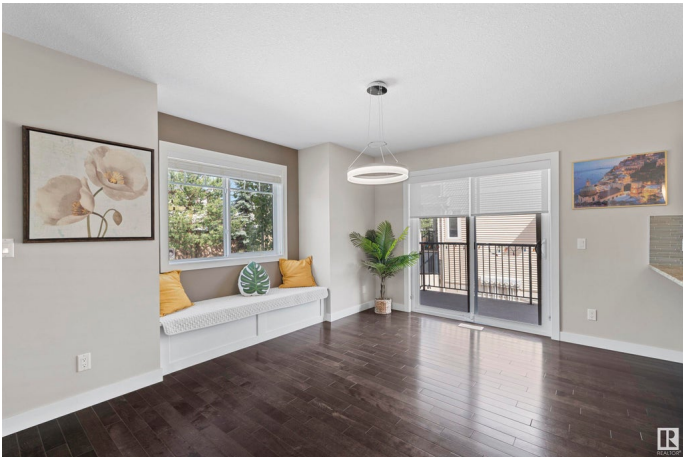
South Terwillegar, Edmonton, AB

Welcome to this charming end-unit townhouse located in the sought-after South Terwillegar community—known for its excellent amenities and unbeatable convenience. This bright and spacious 3-bedroom, 2.5-bathroom townhome features a modern interior, north-south exposure, and extra side windows that bring in abundant natural light. The south-facing living room and primary bedroom overlook a serene green space, creating a peaceful and well-lit atmosphere throughout the day. Tucked away in a quiet spot within the complex, this home offers privacy while still being close to visitor parking and garbage disposal, making everyday living and entertaining friends a breeze. Families will love the proximity to the designated bilingual school (English/Mandarin), offering easy and convenient access to quality education just minutes away. Don’t miss this perfect blend of location, comfort, and lifestyle!

Built in 2011

Essential Information

MLS® #	E4444816
Price	\$355,000
Bedrooms	3
Bathrooms	2.50
Full Baths	2



Half Baths	1
Square Footage	1,337
Acres	0.00
Year Built	2011
Type	Condo / Townhouse
Sub-Type	Townhouse
Style	2 Storey
Status	Active

Community Information

Address	27 7289 South Terwillegar Drive
Area	Edmonton
Subdivision	South Terwillegar
City	Edmonton
County	ALBERTA
Province	AB
Postal Code	T6R 0N5

Amenities

Amenities	See Remarks
Parking	Double Garage Attached

Interior

Interior Features	ensuite bathroom
Appliances	Air Conditioning-Central, Dishwasher-Built-In, Dryer, Microwave Hood Fan, Refrigerator, Stove-Electric, Washer, Curtains and Blinds
Heating	Forced Air-1, Natural Gas
Stories	3
Has Basement	Yes
Basement	Full, Partially Finished

Exterior

Exterior	Wood, Vinyl
Exterior Features	Commercial, Public Transportation, Schools, Shopping Nearby
Roof	Asphalt Shingles
Construction	Wood, Vinyl
Foundation	Concrete Perimeter

School Information

Elementary	ESTHER STARKMAN SCHOOL
Middle	ESTHER STARKMAN SCHOOL
High	LILLIAN OSBORNE SCHOOL

Additional Information

Date Listed	June 27th, 2025
Days on Market	1
Zoning	Zone 14
Condo Fee	\$427

DATA IS DEEMED RELIABLE BUT IS NOT GUARANTEED ACCURATE BY THE REALTORS® ASSOCIATION OF EDMONTON. COPYRIGHT 2025 BY THE REALTORS® ASSOCIATION OF EDMONTON. ALL RIGHTS RESERVED. Trademarks are owned or controlled by the Canadian Real Estate Association (CREA) and identify real estate professionals who are members of CREA (REALTOR®, REALTORS®) and/or the quality of services they provide (MLS®, Multiple Listing Service®)

Listing information last updated on June 28th, 2025 at 4:32am MDT