

## \$600,000 - 3655 28 Street, Edmonton

MLS® #E4444784

**\$600,000**

4 Bedroom, 3.50 Bathroom, 1,776 sqft

Single Family on 0.00 Acres

Wild Rose, Edmonton, AB

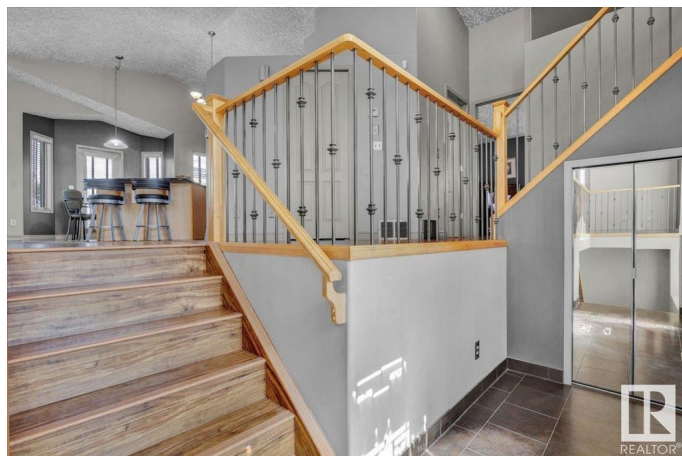
**CUSTOM HOME ON A LARGE CORNER LOT W/ A RARE TRIPLE ATTACHED GARAGE.** Step inside & be greeted by soaring vaulted ceilings & an abundance of natural light streaming through large windows. The open-concept layout is ideal for entertaining & growing families. The kitchen has loads of cabinetry, granite countertops, a large island, corner pantry, & some newer appliances. The main floor includes a roomy primary bedroom w/ a 4-piece ensuite & dedicated makeup vanity. Upstairs, you'll find 2 large bedrooms & another full 4-piece bathroom. The fully finished basement offers even more living space w/ a large rec room, den, bedroom, & a full bathroom- perfect for guests or older kids. Outside is an entertainer's paradise w/ only one neighbour! Enjoy a low-maintenance deck, brick patio, & beautifully maintained landscaping, complete w/ underground sprinklers. Other features include HWT (2019), new laminate & ceramic tile flooring, Sump Pump (2020), Shingles (2020), A/C (2012) & MORE! Furnace room shelving included.

Built in 2000

### Essential Information

MLS® # E4444784

Price \$600,000



|                |                        |
|----------------|------------------------|
| Bedrooms       | 4                      |
| Bathrooms      | 3.50                   |
| Full Baths     | 3                      |
| Half Baths     | 1                      |
| Square Footage | 1,776                  |
| Acres          | 0.00                   |
| Year Built     | 2000                   |
| Type           | Single Family          |
| Sub-Type       | Detached Single Family |
| Style          | Bi-Level               |
| Status         | Active                 |

### Community Information

|             |                |
|-------------|----------------|
| Address     | 3655 28 Street |
| Area        | Edmonton       |
| Subdivision | Wild Rose      |
| City        | Edmonton       |
| County      | ALBERTA        |
| Province    | AB             |
| Postal Code | T6T 1N4        |

### Amenities

|           |                                                                                                                                                              |
|-----------|--------------------------------------------------------------------------------------------------------------------------------------------------------------|
| Amenities | Air Conditioner, Ceiling 9 ft., Hot Water Natural Gas, No Smoking Home, Smart/Program. Thermostat, Sprinkler Sys-Underground, Vaulted Ceiling, Vinyl Windows |
| Parking   | Insulated, Triple Garage Attached                                                                                                                            |

### Interior

|                   |                                                                                                    |
|-------------------|----------------------------------------------------------------------------------------------------|
| Interior Features | ensuite bathroom                                                                                   |
| Appliances        | Dishwasher-Built-In, Dryer, Oven-Microwave, Refrigerator, Stove-Electric, Washer, Window Coverings |
| Heating           | Forced Air-1, Natural Gas                                                                          |
| Fireplace         | Yes                                                                                                |
| Fireplaces        | Mantel                                                                                             |
| Stories           | 3                                                                                                  |
| Has Basement      | Yes                                                                                                |
| Basement          | Full, Finished                                                                                     |

### Exterior

|                   |                                                                                                                |
|-------------------|----------------------------------------------------------------------------------------------------------------|
| Exterior          | Wood, Vinyl                                                                                                    |
| Exterior Features | Corner Lot, Cul-De-Sac, Fenced, Landscaped, Playground Nearby, Public Transportation, Schools, Shopping Nearby |
| Roof              | Asphalt Shingles                                                                                               |
| Construction      | Wood, Vinyl                                                                                                    |
| Foundation        | Concrete Perimeter                                                                                             |

### **School Information**

|            |                            |
|------------|----------------------------|
| Elementary | Velma E./Mary Hanley       |
| Middle     | Thelma C/Father Michael    |
| High       | Elder Dr. F/Austin O'Brien |

### **Additional Information**

|                |                 |
|----------------|-----------------|
| Date Listed    | June 27th, 2025 |
| Days on Market | 4               |
| Zoning         | Zone 30         |

DATA IS DEEMED RELIABLE BUT IS NOT GUARANTEED ACCURATE BY THE REALTORS® ASSOCIATION OF EDMONTON. COPYRIGHT 2025 BY THE REALTORS® ASSOCIATION OF EDMONTON. ALL RIGHTS RESERVED. Trademarks are owned or controlled by the Canadian Real Estate Association (CREA) and identify real estate professionals who are members of CREA (REALTOR®, REALTORS®) and/or the quality of services they provide (MLS®, Multiple Listing Service®)

Listing information last updated on July 1st, 2025 at 7:32am MDT