

\$245,000 - 24 10909 106 Street, Edmonton

MLS® #E4444763

\$245,000

2 Bedroom, 1.5 Bathroom, 890 sqft

Condo / Townhouse on 0.00 Acres

Central Mcdougall, Edmonton, AB

BUNGALOW STYLE TOWNHOUSE JUST STEPS FROM DOWNTOWN. Did you always want a lifestyle of being close to the action but always felt apartment life downtown was not for you or they were just too small. Do you have a pet or small children making this option impractical? Well check out this beauty, walk to Ice District, bike to work or the River Valley. Comes with a single attached garage + driveway parking for up to 2 more vehicles. Front veranda for enjoying warm summer nights. Playground, school and park across the street for your kids. Inside you will find over 1600 sqft, laminate flooring throughout most of the unit, gas fireplace in the living room, expansive kitchen with massive eating bar, 2 bedrooms on the main floor, 1.5 bathrooms including a 2pc primary bedroom ensuite. You thought the main floor was great wait till you see the downstairs that will blow you away. Additional bedroom & bathroom can be built as required downstairs, plus new HWT. Come quick to this amazing one of a kind property.

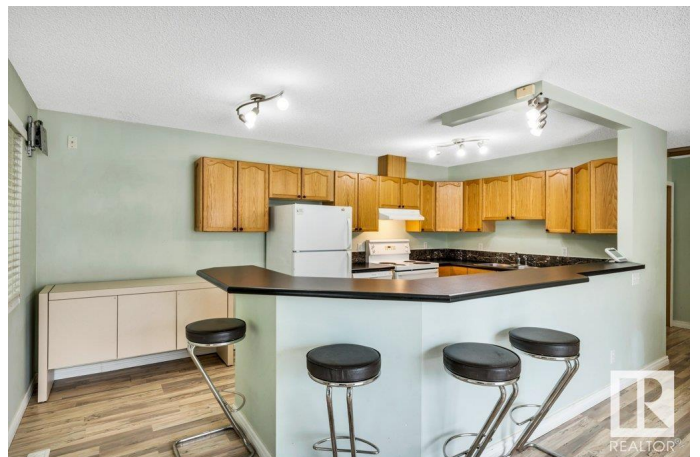
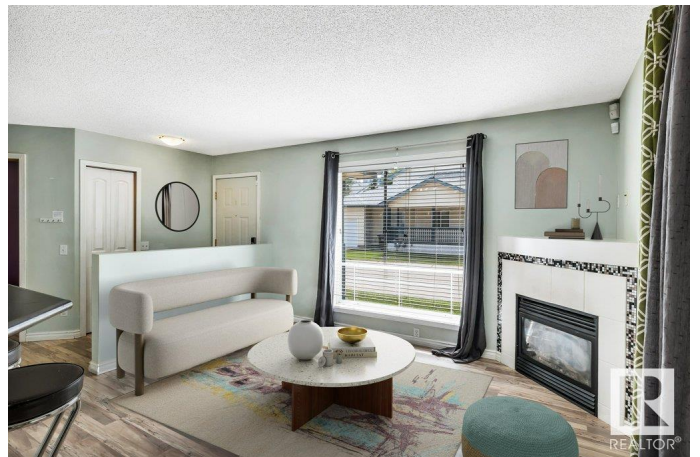
Built in 2002

Essential Information

MLS® # E4444763

Price \$245,000

Bedrooms 2



Bathrooms	1.50
Full Baths	1
Half Baths	1
Square Footage	890
Acres	0.00
Year Built	2002
Type	Condo / Townhouse
Sub-Type	Townhouse
Style	Bungalow
Status	Active

Community Information

Address	24 10909 106 Street
Area	Edmonton
Subdivision	Central Mcdougall
City	Edmonton
County	ALBERTA
Province	AB
Postal Code	T5H 4M7

Amenities

Amenities	Deck
Parking	Single Garage Attached

Interior

Interior Features	ensuite bathroom
Appliances	Dishwasher-Built-In, Dryer, Refrigerator, Stove-Electric, Washer, TV Wall Mount
Heating	Forced Air-1, Natural Gas
Fireplace	Yes
Fireplaces	Corner
Stories	2
Has Basement	Yes
Basement	Full, Finished

Exterior

Exterior	Wood, Vinyl
Exterior Features	Public Transportation, Schools, Shopping Nearby
Roof	Asphalt Shingles

Construction	Wood, Vinyl
Foundation	Concrete Perimeter

Additional Information

Date Listed	June 26th, 2025
Days on Market	60
Zoning	Zone 08
Condo Fee	\$375

DATA IS DEEMED RELIABLE BUT IS NOT GUARANTEED ACCURATE BY THE REALTORS® ASSOCIATION OF EDMONTON. COPYRIGHT 2025 BY THE REALTORS® ASSOCIATION OF EDMONTON. ALL RIGHTS RESERVED.Trademarks are owned or controlled by the Canadian Real Estate Association (CREA) and identify real estate professionals who are members of CREA (REALTOR®, REALTORS®) and/or the quality of services they provide (MLS®, Multiple Listing Service®)

Listing information last updated on August 24th, 2025 at 10:02pm MDT