

\$388,800 - 1101 11027 87 Avenue, Edmonton

MLS® #E4444430

\$388,800

2 Bedroom, 2.00 Bathroom, 1,211 sqft

Condo / Townhouse on 0.00 Acres

Garneau, Edmonton, AB

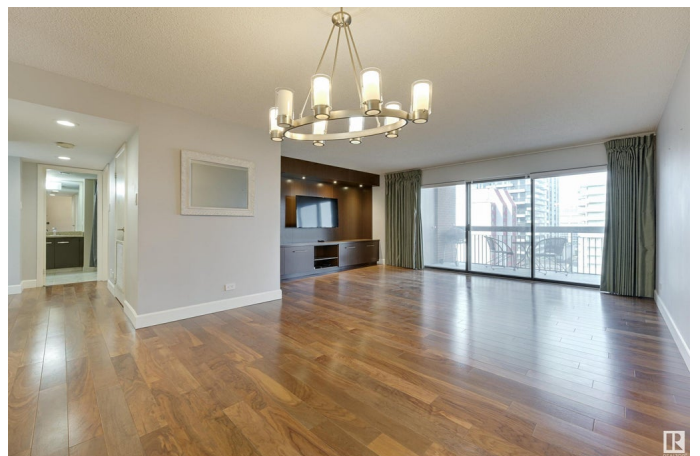
FANTASTIC VIEWS from this 1211 sq.ft. 2 bedroom 2 bathroom condo in CLARIDGE HOUSE conveniently located steps to the U of A, close to transportation, restaurants, coffee shops, & quick access to Whyte Avenue & Downtown. This RENOVATED condo has a modern kitchen with white cabinetry, quartz countertops & stainless steel appliances. Spacious living & dining room with walnut hardwood floors & a built-in cabinet in the living room. Step onto the private, west facing balcony with great views of the U of A Campus & City Views. The 4 piece bathroom has a new vanity with granite counters & is next to the 2nd bedroom. The spacious primary suite has a 3 piece ensuite that has been completely remodeled with a large walk-in shower. Included is the fridge, glass top stove, built-in microwave, dishwasher, INSUITE WASHER & DRYER, window coverings, A/C, 2 TITLED U/G PARKING. The condo fees include all the utilities & the building maintenance, management & caretaker. Party room & visitor parking. Shows very well!

Built in 1979

Essential Information

MLS® # E4444430

Price \$388,800



Bedrooms	2
Bathrooms	2.00
Full Baths	2
Square Footage	1,211
Acres	0.00
Year Built	1979
Type	Condo / Townhouse
Sub-Type	Apartment High Rise
Style	Single Level Apartment
Status	Active

Community Information

Address	1101 11027 87 Avenue
Area	Edmonton
Subdivision	Garneau
City	Edmonton
County	ALBERTA
Province	AB
Postal Code	T6G 2P9

Amenities

Amenities	Air Conditioner, Parking-Visitor, Secured Parking, Security Door, Social Rooms
Parking Spaces	2
Parking	Underground

Interior

Interior Features	ensuite bathroom
Appliances	Air Conditioning-Central, Dishwasher-Built-In, Dryer, Microwave Hood Fan, Refrigerator, Stove-Electric, Washer, Window Coverings
Heating	Fan Coil, Natural Gas
# of Stories	18
Stories	1
Has Basement	Yes
Basement	None, No Basement

Exterior

Exterior	Concrete, Brick
Exterior Features	Golf Nearby, Playground Nearby, Public Transportation, Schools,

	Shopping Nearby, View City
Roof	Tar & Gravel
Construction	Concrete, Brick
Foundation	Concrete Perimeter

Additional Information

Date Listed	June 26th, 2025
Days on Market	2
Zoning	Zone 15
Condo Fee	\$897

DATA IS DEEMED RELIABLE BUT IS NOT GUARANTEED ACCURATE BY THE REALTORS® ASSOCIATION OF EDMONTON. COPYRIGHT 2025 BY THE REALTORS® ASSOCIATION OF EDMONTON. ALL RIGHTS RESERVED. Trademarks are owned or controlled by the Canadian Real Estate Association (CREA) and identify real estate professionals who are members of CREA (REALTOR®, REALTORS®) and/or the quality of services they provide (MLS®, Multiple Listing Service®)

Listing information last updated on June 28th, 2025 at 4:32am MDT