

# \$1,898,000 - 179 Quesnell Crescent, Edmonton

MLS® #E4442510

**\$1,898,000**

4 Bedroom, 5.00 Bathroom, 4,347 sqft  
Single Family on 0.00 Acres

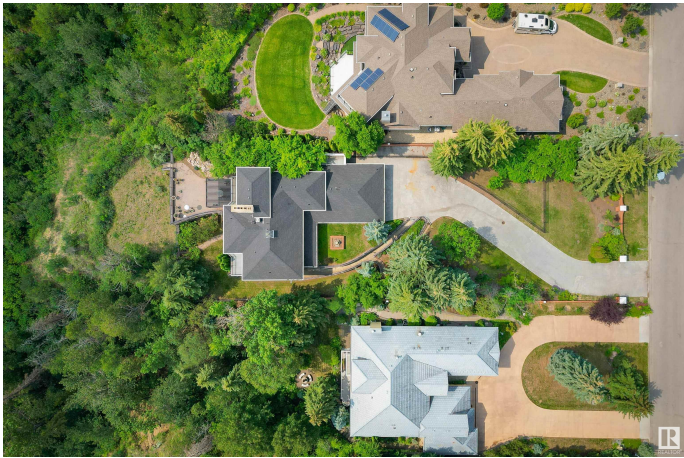
Quesnell Heights, Edmonton, AB

QUESNELL CRESCENT, stunning two-story brick residence on a private 22,938 sq ft lot, overlooking the Saskatchewan River. This upgraded home boasts breathtaking views, a landscaped yard, and multiple outdoor spaces for a private lifestyle. Inside, enjoy a layout designed to maximize the panoramic vistas, with high-quality materials and impeccable craftsmanship throughout. Beyond the breathtaking scenery and privacy, this remarkable residence offers convenient proximity to wonderful schools, shopping, community amenities, the University of Alberta, easy access to Henday and airport and the vibrant Downtown area. Immerse yourself in a world of luxury, privacy.

Built in 1965

## Essential Information

|                |             |
|----------------|-------------|
| MLS® #         | E4442510    |
| Price          | \$1,898,000 |
| Bedrooms       | 4           |
| Bathrooms      | 5.00        |
| Full Baths     | 4           |
| Half Baths     | 2           |
| Square Footage | 4,347       |
| Acres          | 0.00        |
| Year Built     | 1965        |



|          |                        |
|----------|------------------------|
| Type     | Single Family          |
| Sub-Type | Detached Single Family |
| Style    | 2 and Half Storey      |
| Status   | Active                 |

### Community Information

|             |                       |
|-------------|-----------------------|
| Address     | 179 Quesnell Crescent |
| Area        | Edmonton              |
| Subdivision | Quesnell Heights      |
| City        | Edmonton              |
| County      | ALBERTA               |
| Province    | AB                    |
| Postal Code | T5R 5P1               |

### Amenities

|           |                                                                                                                |
|-----------|----------------------------------------------------------------------------------------------------------------|
| Amenities | Air Conditioner, Closet Organizers, Deck, Sauna; Swirlpool; Steam, Sprinkler Sys-Underground, Walkout Basement |
| Parking   | Double Garage Attached                                                                                         |

### Interior

|                   |                                                                                                                                                                                                                    |
|-------------------|--------------------------------------------------------------------------------------------------------------------------------------------------------------------------------------------------------------------|
| Interior Features | ensuite bathroom                                                                                                                                                                                                   |
| Appliances        | Air Conditioning-Central, Dryer, Garage Opener, Hood Fan, Oven-Built-In, Oven-Microwave, Refrigerator, Stove-Electric, Vacuum System Attachments, Vacuum Systems, Washer, Dishwasher-Two, Projector, TV Wall Mount |
| Heating           | Forced Air-2, Natural Gas                                                                                                                                                                                          |
| Fireplace         | Yes                                                                                                                                                                                                                |
| Fireplaces        | Mantel, Stone Facing                                                                                                                                                                                               |
| Stories           | 4                                                                                                                                                                                                                  |
| Has Basement      | Yes                                                                                                                                                                                                                |
| Basement          | Full, Finished                                                                                                                                                                                                     |

### Exterior

|                   |                                                                                                                           |
|-------------------|---------------------------------------------------------------------------------------------------------------------------|
| Exterior          | Wood, Brick                                                                                                               |
| Exterior Features | Fruit Trees/Shrubs, Hillside, Landscaped, Playground Nearby, Private Setting, River Valley View, Schools, Shopping Nearby |
| Roof              | Asphalt Shingles                                                                                                          |
| Construction      | Wood, Brick                                                                                                               |
| Foundation        | Concrete Perimeter                                                                                                        |

**School Information**

|            |              |
|------------|--------------|
| Elementary | Rio Terrace  |
| Middle     | Hillcrest    |
| High       | Jasper Place |

**Additional Information**

|                |                 |
|----------------|-----------------|
| Date Listed    | June 14th, 2025 |
| Days on Market | 2               |
| Zoning         | Zone 22         |

DATA IS DEEMED RELIABLE BUT IS NOT GUARANTEED ACCURATE BY THE REALTORS® ASSOCIATION OF EDMONTON. COPYRIGHT 2025 BY THE REALTORS® ASSOCIATION OF EDMONTON. ALL RIGHTS RESERVED.Trademarks are owned or controlled by the Canadian Real Estate Association (CREA) and identify real estate professionals who are members of CREA (REALTOR®, REALTORS®) and/or the quality of services they provide (MLS®, Multiple Listing Service®)

Listing information last updated on June 15th, 2025 at 9:31pm MDT