

# \$399,900 - 2183 Trumpeter Way, Edmonton

MLS® #E4441196

## \$399,900

3 Bedroom, 2.50 Bathroom, 1,365 sqft  
Single Family on 0.00 Acres

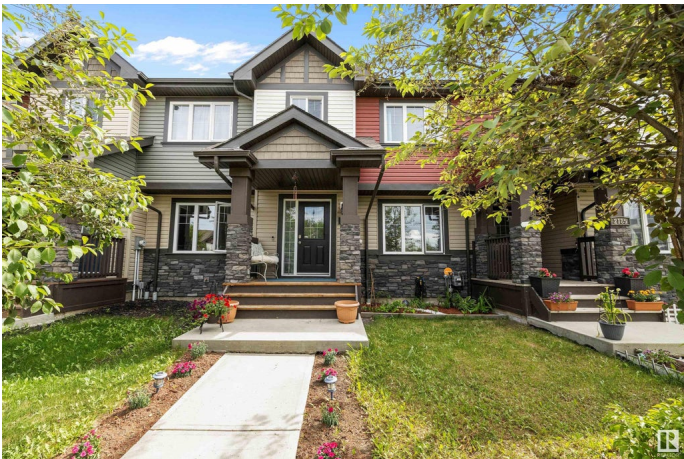
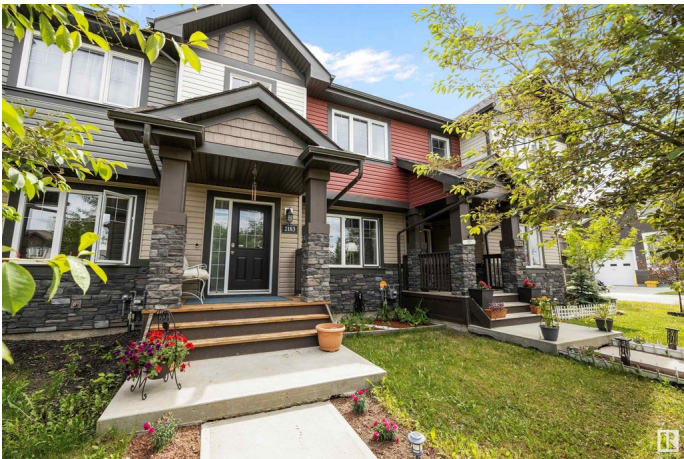
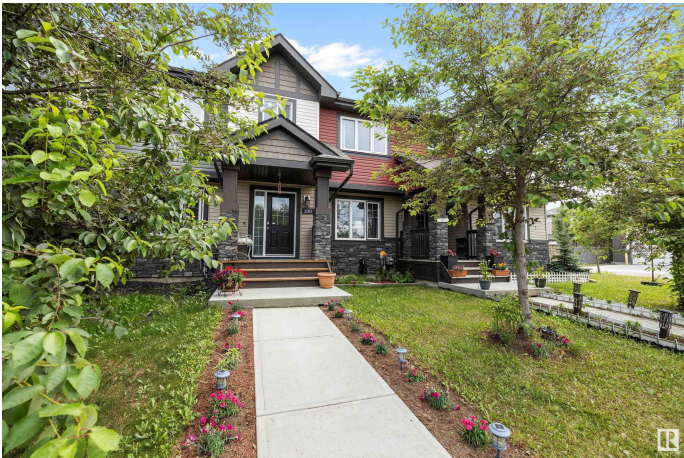
Trumpeter Area, Edmonton, AB

Step into this warm and inviting 2-storey townhouse in the desirable Trumpeter community. Perfect for first-time buyers, downsizers, or growing families! The main floor offers a bright, open layout ideal for everyday living and entertaining, with natural light flowing through the living, dining, and kitchen spaces. Upstairs, find three spacious bedrooms—perfect for a home office, nursery, or guest room—and a full bath with easy access. The unfinished basement is a blank canvas, ready for your dream rec room, gym, or extra bedroom. Outside, enjoy a low-maintenance yard with room to relax or garden—without the weekend work. Affordable, functional, and full of potential—this home checks all the boxes.

Built in 2015

### Essential Information

MLS® #	E4441196
Price	\$399,900
Bedrooms	3
Bathrooms	2.50
Full Baths	2
Half Baths	1
Square Footage	1,365
Acres	0.00



Year Built	2015
Type	Single Family
Sub-Type	Residential Attached
Style	2 Storey
Status	Active

### Community Information

Address	2183 Trumpeter Way
Area	Edmonton
Subdivision	Trumpeter Area
City	Edmonton
County	ALBERTA
Province	AB
Postal Code	T5S 0K2

### Amenities

Amenities	On Street Parking, Deck, Hot Water Natural Gas, No Smoking Home, Vinyl Windows
Parking	Double Garage Detached

### Interior

Interior Features	ensuite bathroom
Appliances	Dishwasher-Built-In, Dryer, Garage Control, Garage Opener, Oven-Microwave, Refrigerator, Stove-Electric, Washer, Window Coverings, Curtains and Blinds
Heating	Forced Air-1, Natural Gas
Stories	2
Has Basement	Yes
Basement	Full, Unfinished

### Exterior

Exterior	Wood, Stone, Vinyl
Exterior Features	Back Lane, Fenced, Landscaped, Low Maintenance Landscape, Park/Reserve, Picnic Area, Playground Nearby, Public Transportation, Schools, Shopping Nearby
Roof	Asphalt Shingles
Construction	Wood, Stone, Vinyl
Foundation	Concrete Perimeter

### Additional Information

Date Listed June 8th, 2025

Days on Market 8

Zoning Zone 59

DATA IS DEEMED RELIABLE BUT IS NOT GUARANTEED ACCURATE BY THE REALTORS® ASSOCIATION OF EDMONTON. COPYRIGHT 2025 BY THE REALTORS® ASSOCIATION OF EDMONTON. ALL RIGHTS RESERVED. Trademarks are owned or controlled by the Canadian Real Estate Association (CREA) and identify real estate professionals who are members of CREA (REALTOR®, REALTORS®) and/or the quality of services they provide (MLS®, Multiple Listing Service®)

Listing information last updated on June 16th, 2025 at 4:02pm MDT