

# **\$785,000 - 409 51110 Rge Road 212, Rural Strathcona County**

MLS® #E4441188

**\$785,000**

4 Bedroom, 3.00 Bathroom, 1,411 sqft

Rural on 3.09 Acres

Keding Estates, Rural Strathcona County, AB

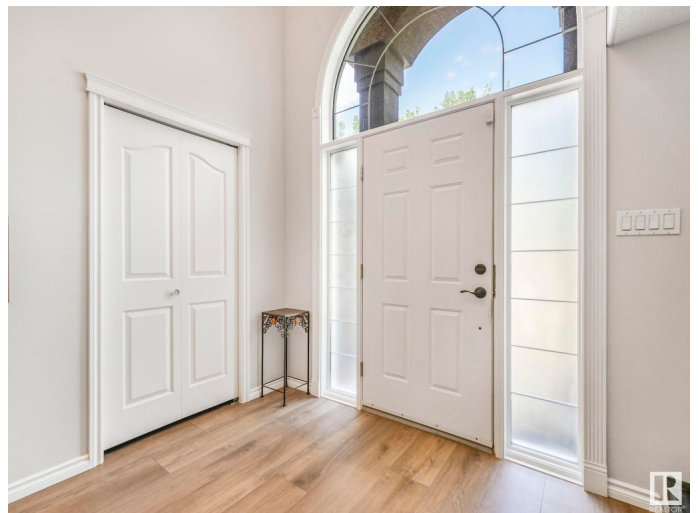
Beautiful 1,410 square foot hillside bungalow on 3.09 Acres in Keding Estates. Nestled in the peaceful and private country residential subdivision of Keding Estates, this stunning home offers the perfect blend of tranquility and convenience. Situated on a secluded lot, this property features a double attached garage and an impressive triple car garage shop with 220V power and radiant heating—perfect for car enthusiasts or hobbyists. The 3+1 bedroom home exudes the peaceful charm of a mountain retreat. Step inside to a bright, open-concept layout featuring a spacious kitchen with a sit-down island, ideal for entertaining. The adjoining dining area overlooks a large, tiered sundeck and a park-like backyard surrounded by forest, your own private sanctuary. The living room is a cozy yet elegant space, boasting large windows that flood the room with natural light and a showcase fireplace with a classic mantle. The primary bedroom offers a touch of luxury with its elegant ensuite, complete with a corner jetted

Built in 2000

## **Essential Information**

MLS® #

E4441188



|                |                        |
|----------------|------------------------|
| Price          | \$785,000              |
| Bedrooms       | 4                      |
| Bathrooms      | 3.00                   |
| Full Baths     | 3                      |
| Square Footage | 1,411                  |
| Acres          | 3.09                   |
| Year Built     | 2000                   |
| Type           | Rural                  |
| Sub-Type       | Detached Single Family |
| Style          | Hillside Bungalow      |
| Status         | Active                 |

### Community Information

|             |                         |
|-------------|-------------------------|
| Address     | 409 51110 Rge Road 212  |
| Area        | Rural Strathcona County |
| Subdivision | Keding Estates          |
| City        | Rural Strathcona County |
| County      | ALBERTA                 |
| Province    | AB                      |
| Postal Code | T8G 1E7                 |

### Amenities

|          |   |
|----------|---|
| Features | Closet Organizers, Deck, Vinyl Windows, Walkout Basement, See Remarks |
|----------|---|

### Interior

|                   |                           |
|-------------------|---------------------------|
| Interior Features | ensuite bathroom          |
| Heating           | Forced Air-1, Natural Gas |
| Stories           | 2                         |
| Has Basement      | Yes                       |
| Basement          | See Remarks, Finished     |

### Exterior

|                   |                                       |
|-------------------|---------------------------------------|
| Exterior          | Wood                                  |
| Exterior Features | Hillside, Landscaped, Private Setting |
| Construction      | Wood                                  |
| Foundation        | Concrete Perimeter                    |

### Additional Information

Date Listed June 4th, 2025

Days on Market 12

Zoning Zone 80

DATA IS DEEMED RELIABLE BUT IS NOT GUARANTEED ACCURATE BY THE REALTORS® ASSOCIATION OF EDMONTON. COPYRIGHT 2025 BY THE REALTORS® ASSOCIATION OF EDMONTON. ALL RIGHTS RESERVED. Trademarks are owned or controlled by the Canadian Real Estate Association (CREA) and identify real estate professionals who are members of CREA (REALTOR®, REALTORS®) and/or the quality of services they provide (MLS®, Multiple Listing Service®)

Listing information last updated on June 16th, 2025 at 3:17pm MDT