

\$1,099,000 - 5410 110 Street, Edmonton

MLS® #E4440588

\$1,099,000

3 Bedroom, 2.50 Bathroom, 2,627 sqft

Single Family on 0.00 Acres

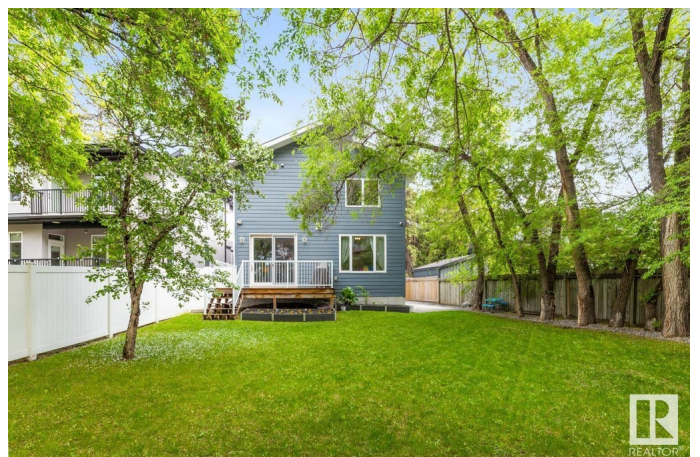
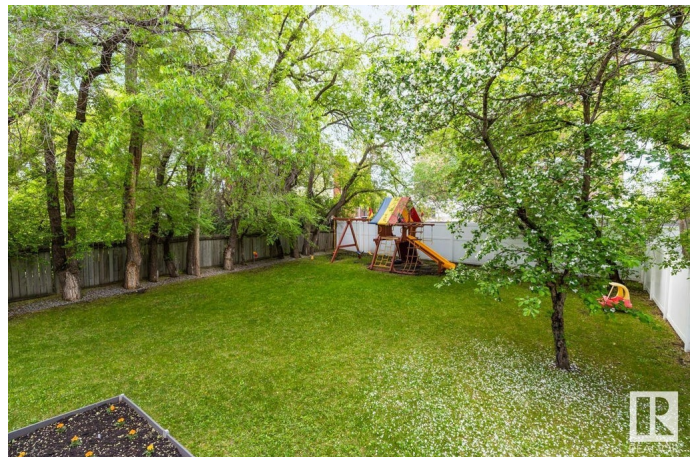
Pleasantview (Edmonton), Edmonton, AB

THE BEST VALUE IN PLEASANTVIEW !!!
INFILL with DOUBLE ATTACHED GARAGE
on a huge SW PIE SHAPED LOT! A great central location just minutes to U of A Hospital and downtown. The main floor offers a functional floor plan w/ a modern white kitchen, large dining space w/ custom wood slider, plus a 2 sided fireplace & spacious great room. Built-in cabinetry in the mudroom and butler's pantry offers ample storage. The main floor den is opposite a fabulous custom staircase w/ open risers and contemporary glass railings. Up to the primary bedroom with a view of large mature trees and a double entrance to the luxurious ensuite bath. Heated floors, double vanities, custom shower, plus HIS and HER walk-in closets. It's even connected to the laundry room! Two additional bedrooms complete with walk-in closets and a spacious bonus room round out the top floor. The backyard is truly an oasis featuring a composite deck, garden beds, and loads of green grass to enjoy the sunny SW exposure. Your short commute could start now!

Built in 2017

Essential Information

MLS® #	E4440588
Price	\$1,099,000



Bedrooms	3
Bathrooms	2.50
Full Baths	2
Half Baths	1
Square Footage	2,627
Acres	0.00
Year Built	2017
Type	Single Family
Sub-Type	Detached Single Family
Style	2 Storey
Status	Active

Community Information

Address	5410 110 Street
Area	Edmonton
Subdivision	Pleasantview (Edmonton)
City	Edmonton
County	ALBERTA
Province	AB
Postal Code	T6H 3E1

Amenities

Amenities	Air Conditioner, Deck, No Animal Home, No Smoking Home, Infill Property, Natural Gas BBQ Hookup
Parking	Double Garage Attached

Interior

Interior Features	ensuite bathroom
Appliances	Air Conditioning-Central, Alarm/Security System, Dishwasher-Built-In, Dryer, Garage Control, Garage Opener, Hood Fan, Oven-Built-In, Oven-Microwave, Refrigerator, Stove-Countertop Electric, Vacuum Systems, Washer, Window Coverings, Wine/Beverage Cooler
Heating	Forced Air-1, Natural Gas
Fireplace	Yes
Fireplaces	Double Sided
Stories	2
Has Basement	Yes
Basement	Full, Unfinished

Exterior

Exterior	Wood, Stucco, Hardie Board Siding
Exterior Features	Fenced, Flat Site, Fruit Trees/Shrubs, Landscaped, No Back Lane, Playground Nearby, Public Transportation, Schools, Shopping Nearby
Roof	Asphalt Shingles
Construction	Wood, Stucco, Hardie Board Siding
Foundation	Concrete Perimeter

School Information

Elementary	Lendrum Elementary School
Middle	Avalon Jr High
High	Strathcona High School

Additional Information

Date Listed	June 5th, 2025
Days on Market	23
Zoning	Zone 15

DATA IS DEEMED RELIABLE BUT IS NOT GUARANTEED ACCURATE BY THE REALTORS® ASSOCIATION OF EDMONTON. COPYRIGHT 2025 BY THE REALTORS® ASSOCIATION OF EDMONTON. ALL RIGHTS RESERVED. Trademarks are owned or controlled by the Canadian Real Estate Association (CREA) and identify real estate professionals who are members of CREA (REALTOR®, REALTORS®) and/or the quality of services they provide (MLS®, Multiple Listing Service®)

Listing information last updated on June 28th, 2025 at 4:32am MDT