

## \$695,000 - 1920 33b Street, Edmonton

MLS® #E4440297

**\$695,000**

4 Bedroom, 3.50 Bathroom, 2,225 sqft

Single Family on 0.00 Acres

Laurel, Edmonton, AB

**FULLY FINISHED! SECOND KITCHEN! PIE LOT!** Landmark Built 2 Storey home in the Laurel neighborhood featuring 3+1 bedrooms, 3.5 baths, and a **WALKOUT BASEMENT!** The main floor showcases an Open Concept design with a chef's kitchen boasting granite countertops, stainless steel appliances, a spacious island, plus walk through pantry. A comfortable living area with a gas fireplace, dining space, a convenient 2 piece bath and Main Floor Laundry complete the main level. Upstairs, discover a sprawling Bonus Room, 3 bedrooms, including a lavish Primary Suite with a 4 piece ensuite. The fully finished basement offers a bedroom, 3 piece bath, a Second Kitchen, and a versatile recreation room. Enjoy outdoor living in the Fully Fenced backyard with a patio, lower level and upper level decks, PLUS a Double Attached garage featuring a unique **SPICE KITCHEN!** This exceptional property is ideally located near schools, shopping, public transportation, and more.

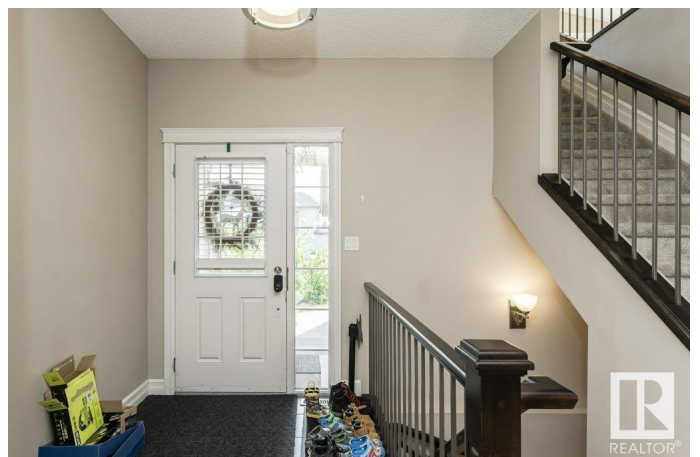
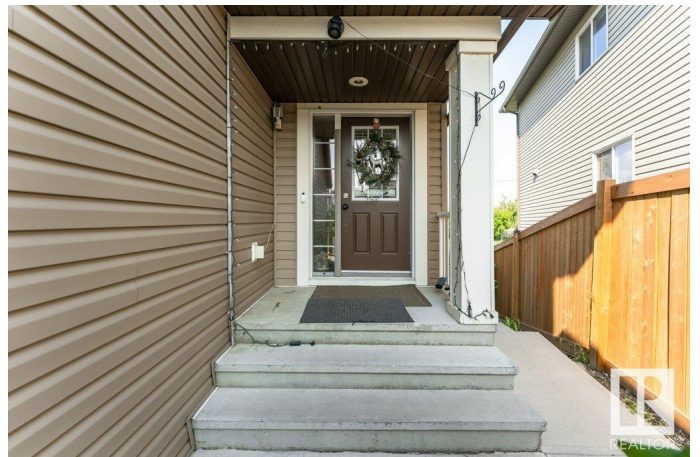
Built in 2012

### Essential Information

MLS® # E4440297

Price \$695,000

Bedrooms 4



Bathrooms	3.50
Full Baths	3
Half Baths	1
Square Footage	2,225
Acres	0.00
Year Built	2012
Type	Single Family
Sub-Type	Detached Single Family
Style	2 Storey
Status	Active

### Community Information

Address	1920 33b Street
Area	Edmonton
Subdivision	Laurel
City	Edmonton
County	ALBERTA
Province	AB
Postal Code	T6T 0L3

### Amenities

Amenities	Deck, Patio
Parking	Double Garage Attached

### Interior

Interior Features	ensuite bathroom
Appliances	Dishwasher-Built-In, Dryer, Garage Control, Garage Opener, Oven-Microwave, Stove-Electric, Stove-Gas, Washer, Window Coverings, Refrigerators-Two
Heating	Forced Air-1, Natural Gas
Stories	3
Has Basement	Yes
Basement	Full, Finished

### Exterior

Exterior	Wood, Vinyl
Exterior Features	Fenced, Landscaped, Public Transportation, Schools, Shopping Nearby
Roof	Asphalt Shingles
Construction	Wood, Vinyl

Foundation                      Concrete Perimeter

**Additional Information**

Date Listed                      June 4th, 2025

Days on Market                12

Zoning                            Zone 30

DATA IS DEEMED RELIABLE BUT IS NOT GUARANTEED ACCURATE BY THE REALTORS® ASSOCIATION OF EDMONTON. COPYRIGHT 2025 BY THE REALTORS® ASSOCIATION OF EDMONTON. ALL RIGHTS RESERVED.Trademarks are owned or controlled by the Canadian Real Estate Association (CREA) and identify real estate professionals who are members of CREA (REALTOR®, REALTORS®) and/or the quality of services they provide (MLS®, Multiple Listing Service®)

Listing information last updated on June 16th, 2025 at 7:02pm MDT