

## \$599,000 - 8104 85 Avenue, Edmonton

MLS® #E4438913

**\$599,000**

4 Bedroom, 2.00 Bathroom, 1,290 sqft

Single Family on 0.00 Acres

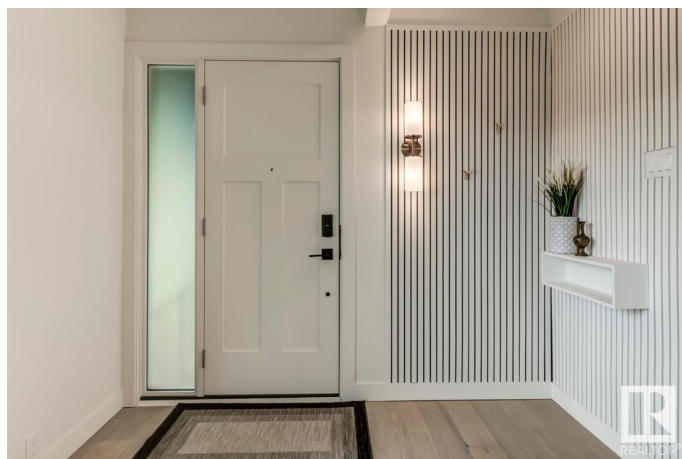
Idylwylde, Edmonton, AB

Immaculate bungalow with 1,290 sq. ft. of inviting living space, centrally located in Idylwylde, a neighborhood offering vintage charm and modern conveniences! The main floor boasts a newly remodeled kitchen that overlooks a bright and airy dining & living room . A remodeled 5 piece main bath, 2 additional bedrooms and a primary bedroom overlooking the backyard complete the main level. The renovated basement offers a spacious recreation room, 4th bedroom, playroom/den, a 3 piece bathroom with large shower and a laundry/mechanical room. This home provides plenty of space for everyone! Step outside to enjoy the landscaped yard featuring a patio for outdoor relaxation, a fully fenced yard for privacy and a double detached garage (21'x25') that has room for extra storage. Nearby amenities include Bonnie Doon mall, LRT, public swimming pool, library and sports fields.

Built in 1952

### Essential Information

MLS® #	E4438913
Price	\$599,000
Bedrooms	4
Bathrooms	2.00
Full Baths	2



Square Footage	1,290
Acres	0.00
Year Built	1952
Type	Single Family
Sub-Type	Detached Single Family
Style	Bungalow
Status	Active

### Community Information

Address	8104 85 Avenue
Area	Edmonton
Subdivision	Idylwylde
City	Edmonton
County	ALBERTA
Province	AB
Postal Code	T6C 4H3

### Amenities

Amenities	Off Street Parking, On Street Parking, Patio
Parking	Double Garage Detached, Insulated, Over Sized, Rear Drive Access

### Interior

Appliances	Dishwasher-Built-In, Dryer, Garage Control, Garage Opener, Hood Fan, Oven-Microwave, Refrigerator, Stove-Electric, Washer
Heating	Forced Air-1, Natural Gas
Stories	2
Has Basement	Yes
Basement	Partial, Finished

### Exterior

Exterior	Wood, Stone, Stucco
Exterior Features	Back Lane, Fenced, Landscaped, Public Swimming Pool, Public Transportation, Shopping Nearby
Roof	Asphalt Shingles
Construction	Wood, Stone, Stucco
Foundation	Concrete Perimeter

### Additional Information

Date Listed	May 28th, 2025
-------------	----------------

Days on Market 11

Zoning Zone 18

DATA IS DEEMED RELIABLE BUT IS NOT GUARANTEED ACCURATE BY THE REALTORS® ASSOCIATION OF EDMONTON. COPYRIGHT 2025 BY THE REALTORS® ASSOCIATION OF EDMONTON. ALL RIGHTS RESERVED. Trademarks are owned or controlled by the Canadian Real Estate Association (CREA) and identify real estate professionals who are members of CREA (REALTOR®, REALTORS®) and/or the quality of services they provide (MLS®, Multiple Listing Service®)

Listing information last updated on June 8th, 2025 at 8:02pm MDT