

\$569,900 - 8937 151 Street, Edmonton

MLS® #E4438867

\$569,900

3 Bedroom, 2.50 Bathroom, 1,652 sqft

Single Family on 0.00 Acres

Jasper Park, Edmonton, AB

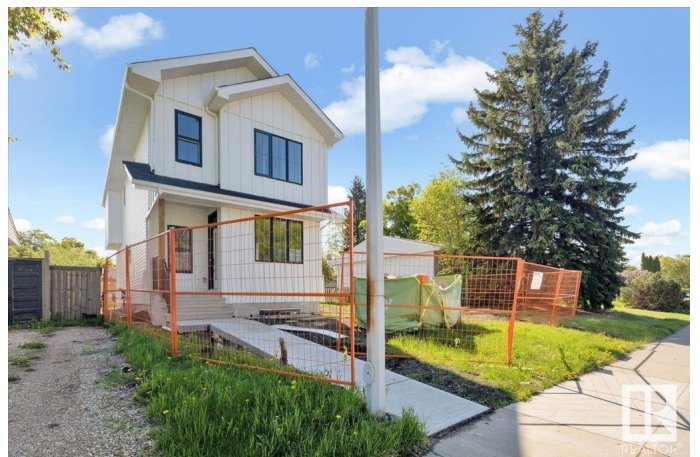
Welcome to Jasper Park! Welcome to this stunning new build in a family-friendly neighbourhood. This beautifully designed functional home offers over 1,650 sqft of thoughtfully planned living space, w/ an open concept layout ideal for everyday living. You are greeted by contemporary finishes - a modern fireplace, modern lighting fixtures & durable, high-end flooring throughout the main floor. The gourmet kitchen is a chef's dream featuring sleek cabinetry, granite countertops, large pantry & a spacious island/ BREAKFAST NOOK!. A convenient mudroom off the garage entrance adds convenience. Upstairs, you'll find 3 spacious bedrooms incl. a serene primary suite w/ a private ensuite W/ DOUBLE VANITY & WIC. 2 add. bedrooms & a full bath. The unfinished basement offers over 694 sqft of flexible space, ready for your custom touch for extra living space or recreational space! Enjoy peace of mind w/ a new home warranty + a \$5,000 appliance credit fr. the builder! Minutes from top-rated schools & West Edmonton Mall!

Built in 2025

Essential Information

MLS® # E4438867

Price \$569,900



Bedrooms	3
Bathrooms	2.50
Full Baths	2
Half Baths	1
Square Footage	1,652
Acres	0.00
Year Built	2025
Type	Single Family
Sub-Type	Detached Single Family
Style	2 Storey
Status	Active

Community Information

Address	8937 151 Street
Area	Edmonton
Subdivision	Jasper Park
City	Edmonton
County	ALBERTA
Province	AB
Postal Code	T5R 1J1

Amenities

Amenities	No Animal Home, No Smoking Home, See Remarks, Infill Property
Parking Spaces	4
Parking	Double Garage Detached

Interior

Interior Features	ensuite bathroom
Appliances	See Remarks, Builder Appliance Credit
Heating	Forced Air-1, Natural Gas
Stories	2
Has Basement	Yes
Basement	Full, Unfinished

Exterior

Exterior	Wood, Vinyl
Exterior Features	Back Lane, Fenced, Flat Site, Park/Reserve, Playground Nearby, Public Transportation, Schools, Shopping Nearby
Roof	Asphalt Shingles

Construction	Wood, Vinyl
Foundation	Concrete Perimeter

School Information

Elementary	Meadowlark School
Middle	James Gibbons School
High	Jasper Place School

Additional Information

Date Listed	May 28th, 2025
Days on Market	11
Zoning	Zone 22

DATA IS DEEMED RELIABLE BUT IS NOT GUARANTEED ACCURATE BY THE REALTORS® ASSOCIATION OF EDMONTON. COPYRIGHT 2025 BY THE REALTORS® ASSOCIATION OF EDMONTON. ALL RIGHTS RESERVED.Trademarks are owned or controlled by the Canadian Real Estate Association (CREA) and identify real estate professionals who are members of CREA (REALTOR®, REALTORS®) and/or the quality of services they provide (MLS®, Multiple Listing Service®)

Listing information last updated on June 8th, 2025 at 3:17pm MDT