

## \$439,900 - 2683 Maple Way, Edmonton

MLS® #E4438842

**\$439,900**

3 Bedroom, 2.50 Bathroom, 1,447 sqft

Single Family on 0.00 Acres

Maple Crest, Edmonton, AB

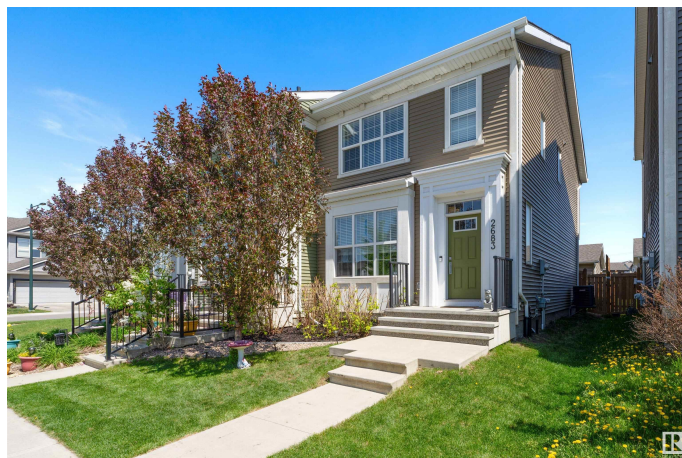
This beautiful former showhome END UNIT 2 storey, is the perfect place to call home! The sun filled main floor has a front living room, spacious central dining space & galley kitchen w/ plenty of cabinets, quartz countertops, stainless steel appliances, a huge peninsula counter to prep food and sit up at, and a sink overlooking your backyard! Completing this level is a mudroom and 2 piece bathroom. Upstairs hosts a 4 piece main bathroom, and 3 bedrooms including the Primary Suite w/ walk-in closet & 3 piece ensuite. The basement is unspoiled, but has plumbing roughed in for a future bathroom and plenty of space to develop as you need! The backyard is fully landscaped w/ a wood deck and concrete path to the double detached garage. Fresh neutral interior colours, stunning curb appeal, true pride in ownership & AIR CONDITIONING set this unit apart! Located in beautiful Maple Crest, steps to walking trails, parks and shopping, public transportation, convenient Whitemud & Anthony Henday access & much more!

Built in 2017

### Essential Information

MLS® # E4438842

Price \$439,900



Bedrooms	3
Bathrooms	2.50
Full Baths	2
Half Baths	1
Square Footage	1,447
Acres	0.00
Year Built	2017
Type	Single Family
Sub-Type	Residential Attached
Style	2 Storey
Status	Active

### Community Information

Address	2683 Maple Way
Area	Edmonton
Subdivision	Maple Crest
City	Edmonton
County	ALBERTA
Province	AB
Postal Code	T6T 2C8

### Amenities

Amenities	On Street Parking, Air Conditioner, Ceiling 9 ft., Deck, Detectors Smoke, Exterior Walls- 2"x6", Vinyl Windows
Parking	Double Garage Detached

### Interior

Interior Features	ensuite bathroom
Appliances	Air Conditioning-Central, Dishwasher-Built-In, Dryer, Garage Control, Garage Opener, Microwave Hood Fan, Refrigerator, Stove-Electric, Washer, Window Coverings
Heating	Forced Air-1, Natural Gas
Stories	2
Has Basement	Yes
Basement	Full, Unfinished

### Exterior

Exterior	Wood, Vinyl
Exterior Features	Back Lane, Fenced, Flat Site, Landscaped, Picnic Area, Playground

Nearby, Public Swimming Pool, Public Transportation, Schools,  
Shopping Nearby

Roof Asphalt Shingles  
Construction Wood, Vinyl  
Foundation Concrete Perimeter

### **Additional Information**

Date Listed May 28th, 2025  
Days on Market 11  
Zoning Zone 30

DATA IS DEEMED RELIABLE BUT IS NOT GUARANTEED ACCURATE BY THE REALTORS® ASSOCIATION OF EDMONTON. COPYRIGHT 2025 BY THE REALTORS® ASSOCIATION OF EDMONTON. ALL RIGHTS RESERVED. Trademarks are owned or controlled by the Canadian Real Estate Association (CREA) and identify real estate professionals who are members of CREA (REALTOR®, REALTORS®) and/or the quality of services they provide (MLS®, Multiple Listing Service®)

Listing information last updated on June 8th, 2025 at 2:17pm MDT