

\$129,500 - 306 2311 119 Street, Edmonton

MLS® #E4438798

\$129,500

2 Bedroom, 1.00 Bathroom, 840 sqft

Condo / Townhouse on 0.00 Acres

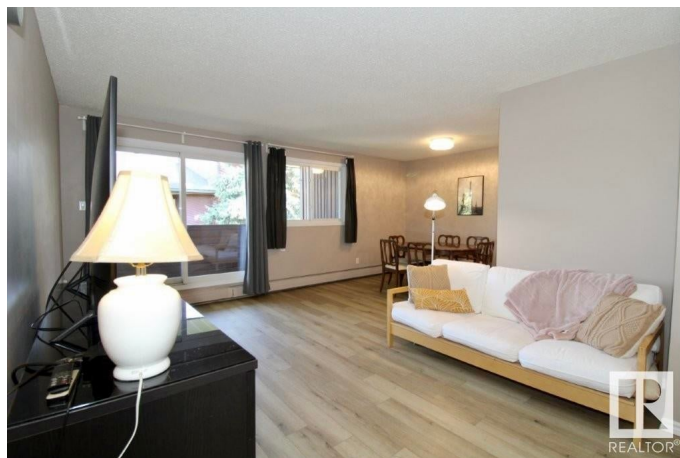
Blue Quill, Edmonton, AB

Welcome to Featherstone Condominiums in southwest Edmonton! This well-designed *****TOP FLOOR***** 2-bedroom, 1 bathroom unit offers 840 sq ft of functional and stylish living space. Enjoy laminate and vinyl flooring throughout, a spacious living room, and a separate dining area—perfect for entertaining or working from home. Step outside to your large private balcony with storage, and take advantage of the in-suite laundry (washer included). The kitchen features generous cabinet space, and the large bedroom and large closet with additional west facing bedroom. One assigned surface parking stall is included. Fantastic location with easy access to 23rd Avenue, and on major bus routes to Century Park LRT and South Edmonton Common. Ideal for first-time buyers, students, or investors looking for a well-maintained unit in a great location.

Built in 1977

Essential Information

MLS® #	E4438798
Price	\$129,500
Bedrooms	2
Bathrooms	1.00
Full Baths	1
Square Footage	840



Acres	0.00
Year Built	1977
Type	Condo / Townhouse
Sub-Type	Lowrise Apartment
Style	3 Storey
Status	Active

Community Information

Address	306 2311 119 Street
Area	Edmonton
Subdivision	Blue Quill
City	Edmonton
County	ALBERTA
Province	AB
Postal Code	T6J 4E2

Amenities

Amenities	Recreation Room/Centre
Parking	Parking Pad Cement/Paved

Interior

Appliances	Dishwasher-Built-In, Fan-Ceiling, Refrigerator, Stove-Electric, Washer
Heating	Baseboard, Electric
# of Stories	3
Stories	3
Has Basement	Yes
Basement	None, No Basement

Exterior

Exterior	Wood
Exterior Features	See Remarks
Roof	Asphalt Shingles
Construction	Wood
Foundation	Concrete Perimeter

Additional Information

Date Listed	May 27th, 2025
Days on Market	12
Zoning	Zone 16

Condo Fee \$566

DATA IS DEEMED RELIABLE BUT IS NOT GUARANTEED ACCURATE BY THE REALTORS® ASSOCIATION OF EDMONTON. COPYRIGHT 2025 BY THE REALTORS® ASSOCIATION OF EDMONTON. ALL RIGHTS RESERVED.Trademarks are owned or controlled by the Canadian Real Estate Association (CREA) and identify real estate professionals who are members of CREA (REALTOR®, REALTORS®) and/or the quality of services they provide (MLS®, Multiple Listing Service®)

Listing information last updated on June 8th, 2025 at 11:02am MDT