

# **\$958,000 - #44 26106 Twp Road 532 A, Rural Parkland County**

MLS® #E4438057

**\$958,000**

4 Bedroom, 3.00 Bathroom, 1,869 sqft

Rural on 0.55 Acres

Helenslea Heath, Rural Parkland County, AB

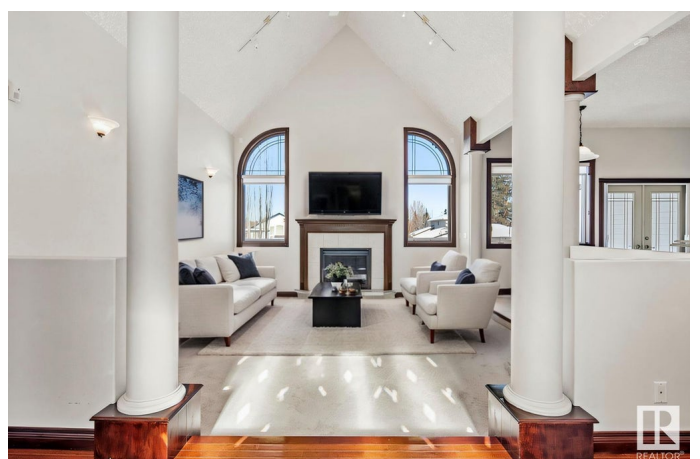
Stunning Country Estate Walkout Bungalow by Binder Construction, very close to West Edmonton and Big Lake. This elegant 4-bedroom home is filled with natural light and showcases real mahogany floors and doors throughout. The open-concept kitchen with granite counters overlooks a grand great room with gas fireplace, perfect for entertaining. Enjoy formal meals in the dining room or step out onto the expansive 650 sq. ft. rubber deck with panoramic views of the park-like backyard. The spacious primary suite features a luxurious ensuite with jetted tub, separate shower, and walk-in closet. The fully finished walkout level includes in-floor heating, a large family room, a 4th bedroom with walk-in closet, steam shower bath, generous storage, and a covered patio. Extras include A/C, a newer roof, oversized heated double attached garage, and an oversized heated detached garage (28x26) with a massive driveway. School bus conveniently stops right in front. This home blends comfort & lasting quality. Virtual Staged

Built in 1999

## **Essential Information**

MLS® #

E4438057



|                |                        |
|----------------|------------------------|
| Price          | \$958,000              |
| Bedrooms       | 4                      |
| Bathrooms      | 3.00                   |
| Full Baths     | 3                      |
| Square Footage | 1,869                  |
| Acres          | 0.55                   |
| Year Built     | 1999                   |
| Type           | Rural                  |
| Sub-Type       | Detached Single Family |
| Style          | Bungalow               |
| Status         | Active                 |

### Community Information

|             |                          |
|-------------|--------------------------|
| Address     | #44 26106 Twp Road 532 A |
| Area        | Rural Parkland County    |
| Subdivision | Helenslea Heath          |
| City        | Rural Parkland County    |
| County      | ALBERTA                  |
| Province    | AB                       |
| Postal Code | T7Y 1A3                  |

### Amenities

|          |   |
|----------|---|
| Features | Air Conditioner, Closet Organizers, Deck, No Animal Home, Sauna; Swirlpool; Steam, Sprinkler System-Fire, Vaulted Ceiling, Walkout Basement |
|----------|---|

### Interior

|                   |   |
|-------------------|---|
| Interior Features | ensuite bathroom                                |
| Heating           | Forced Air-1, In Floor Heat System, Natural Gas |
| Stories           | 2   |
| Has Basement      | Yes   |
| Basement          | Full, Finished                                  |

### Exterior

|                   |  |
|-------------------|--|
| Exterior          | Wood   |
| Exterior Features | Fenced, Flat Site, Fruit Trees/Shrubs, Golf Nearby, Landscaped, Schools, Shopping Nearby |
| Construction      | Wood   |
| Foundation        | Concrete Perimeter   |

**Additional Information**

Date Listed            May 23rd, 2025  
Days on Market      25  
Zoning                Zone 70

DATA IS DEEMED RELIABLE BUT IS NOT GUARANTEED ACCURATE BY THE REALTORS® ASSOCIATION OF EDMONTON. COPYRIGHT 2025 BY THE REALTORS® ASSOCIATION OF EDMONTON. ALL RIGHTS RESERVED.Trademarks are owned or controlled by the Canadian Real Estate Association (CREA) and identify real estate professionals who are members of CREA (REALTOR®, REALTORS®) and/or the quality of services they provide (MLS®, Multiple Listing Service®)  
Listing information last updated on June 16th, 2025 at 9:31pm MDT