

# \$399,000 - 29 Anita Crescent, St. Albert

MLS® #E4434976

**\$399,000**

3 Bedroom, 2.50 Bathroom, 1,227 sqft  
Single Family on 0.00 Acres

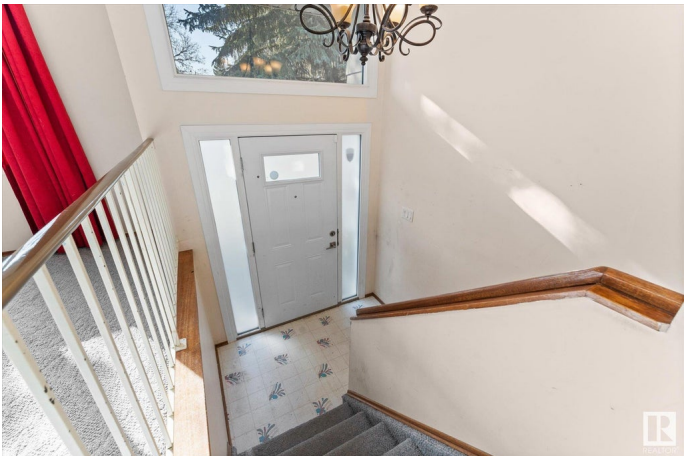
Akinsdale, St. Albert, AB

Opportunity awaits in the desirable community of Akinsdale, St. Albert! This 1227 sq ft bi-level offers incredible potential for renovators, investors, or first-time buyers. Featuring a spacious layout and a large backyard ideal for entertaining, this property is ready for your vision. The double detached garage provides ample parking and storage. Nestled in a family-friendly neighbourhood just steps from schools, parks, and all essential amenities, this home combines convenience with charm. Whether you're looking to create your dream home or expand your rental portfolio, this home has it all! Recent Upgrades Include : ROOF(2020), HWT(2022), TRIPLE PANE WINDOWS(2021)

Built in 1976

## Essential Information

MLS® #	E4434976
Price	\$399,000
Bedrooms	3
Bathrooms	2.50
Full Baths	2
Half Baths	1
Square Footage	1,227
Acres	0.00
Year Built	1976



Type	Single Family
Sub-Type	Detached Single Family
Style	Bi-Level
Status	Active

### Community Information

Address	29 Anita Crescent
Area	St. Albert
Subdivision	Akinsdale
City	St. Albert
County	ALBERTA
Province	AB
Postal Code	T8N 2W4

### Amenities

Amenities	Fire Pit, Patio
Parking	Double Garage Detached

### Interior

Interior Features	ensuite bathroom
Appliances	Dishwasher-Built-In, Dryer, Fan-Ceiling, Garage Control, Garage Opener, Microwave Hood Fan, Refrigerator, Stove-Electric, Washer, Window Coverings
Heating	Forced Air-1, Natural Gas
Fireplace	Yes
Fireplaces	Brick Facing, Mantel
Stories	2
Has Basement	Yes
Basement	Full, Finished

### Exterior

Exterior	Wood, Metal, Stucco
Exterior Features	Cul-De-Sac, Fenced, Fruit Trees/Shrubs, Golf Nearby, Landscaped, Playground Nearby, Public Transportation, Schools, Shopping Nearby
Roof	Asphalt Shingles
Construction	Wood, Metal, Stucco
Foundation	Concrete Perimeter

### Additional Information

Date Listed	May 7th, 2025
-------------	---------------

Days on Market 3

Zoning Zone 24

DATA IS DEEMED RELIABLE BUT IS NOT GUARANTEED ACCURATE BY THE REALTORS® ASSOCIATION OF EDMONTON. COPYRIGHT 2025 BY THE REALTORS® ASSOCIATION OF EDMONTON. ALL RIGHTS RESERVED. Trademarks are owned or controlled by the Canadian Real Estate Association (CREA) and identify real estate professionals who are members of CREA (REALTOR®, REALTORS®) and/or the quality of services they provide (MLS®, Multiple Listing Service®)

Listing information last updated on May 10th, 2025 at 12:47pm MDT