

**\$599,900 - 408 27 Street, Edmonton**

MLS® #E4434616

**\$599,900**

4 Bedroom, 3.00 Bathroom, 1,887 sqft  
Single Family on 0.00 Acres

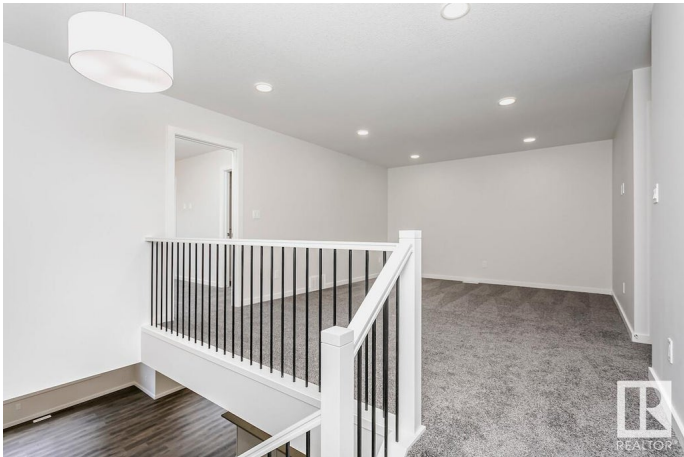
Alces, Edmonton, AB

The Stella is a spacious single family home with double front attached garage home, 9â€™™ ceilings on the Main floor bedroom and full bathroom featuring a stand-up shower with tiled walls for your short/long term visitorâ€™™s convenience. The kitchen overlooks the great room with a 50â€• linear fireplace, dining area, and features quartz counters with extensive cabinet space, 4-piece Samsung appliance package included. Spacious walk-through pantry which leads to the mudroom. A side entrance is included for potential future development; Basement ceiling height upgraded to 9â€™™, for a more spacious feel, and 3-piece rough-in for future bathroom. Metal spindle railing on the main and second floor. The primary ensuite has dual sinks in the vanity and a 5â€™™ stand up shower with tiled walls. Upstairs you will find a central bonus room, 3 bedrooms, laundry, and linen closet. Photos are representative\*

Built in 2025

**Essential Information**

|            |           |
|------------|-----------|
| MLS® #     | E4434616  |
| Price      | \$599,900 |
| Bedrooms   | 4         |
| Bathrooms  | 3.00      |
| Full Baths | 3         |



|                |                        |
|----------------|------------------------|
| Square Footage | 1,887                  |
| Acres          | 0.00                   |
| Year Built     | 2025                   |
| Type           | Single Family          |
| Sub-Type       | Detached Single Family |
| Style          | 2 Storey               |
| Status         | Active                 |

### **Community Information**

|             |               |
|-------------|---------------|
| Address     | 408 27 Street |
| Area        | Edmonton      |
| Subdivision | Alces         |
| City        | Edmonton      |
| County      | ALBERTA       |
| Province    | AB            |
| Postal Code | T6X 3H9       |

### **Amenities**

|                |                                |
|----------------|--------------------------------|
| Amenities      | Closet Organizers, See Remarks |
| Parking Spaces | 4                              |
| Parking        | Double Garage Attached         |

### **Interior**

|                   |   |
|-------------------|---|
| Interior Features | ensuite bathroom  |
| Appliances        | Dishwasher-Built-In, Oven-Microwave, Refrigerator, Stove-Electric |
| Heating           | Forced Air-1, Natural Gas   |
| Fireplace         | Yes   |
| Fireplaces        | Insert  |
| Stories           | 2   |
| Has Basement      | Yes   |
| Basement          | Full, Unfinished  |

### **Exterior**

|                   |  |
|-------------------|--|
| Exterior          | Wood, Vinyl                                      |
| Exterior Features | Park/Reserve, Playground Nearby, Shopping Nearby |
| Roof              | Asphalt Shingles                                 |
| Construction      | Wood, Vinyl                                      |
| Foundation        | Concrete Perimeter                               |

### **Additional Information**

Date Listed May 5th, 2025

Days on Market 5

Zoning Zone 53

DATA IS DEEMED RELIABLE BUT IS NOT GUARANTEED ACCURATE BY THE REALTORS® ASSOCIATION OF EDMONTON. COPYRIGHT 2025 BY THE REALTORS® ASSOCIATION OF EDMONTON. ALL RIGHTS RESERVED. Trademarks are owned or controlled by the Canadian Real Estate Association (CREA) and identify real estate professionals who are members of CREA (REALTOR®, REALTORS®) and/or the quality of services they provide (MLS®, Multiple Listing Service®)

Listing information last updated on May 10th, 2025 at 12:02am MDT