

\$127,400 - 401 13910 Stony Plain Road, Edmonton

MLS® #E4434282

\$127,400

1 Bedroom, 1.00 Bathroom, 670 sqft

Condo / Townhouse on 0.00 Acres

Glenora, Edmonton, AB

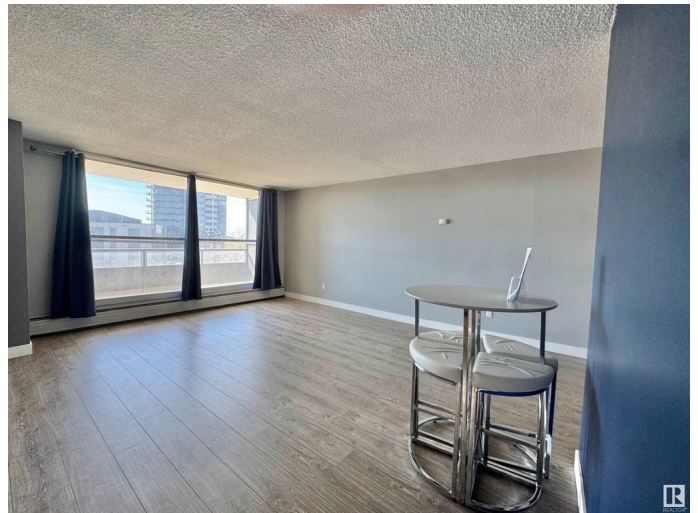
IMMEDIATE POSSESSION, ALL UTILITIES INCLUDED & CONCRETE CONSTRUCTION for peace and privacy. Perfect for empty-nesters, down-sizers and students, this fully renovated unit boasts an open-concept living / dining area with neutral vinyl plank flooring and stylish colour tones. UPGRADES include a beautifully updated kitchen (2019) featuring granite counters, high-gloss 2-tone cabinetry w/ pull-outs, under-cabinet lighting and stainless steel appliances, built-in dry bar area w/ mini-fridge, and FLOOR-TO-CEILING STORAGE, and 4pc modern bath. Completing the floor plan is a spacious primary bedroom offering a huge closet, large in-suite storage room, and access to your MASSIVE WEST FACING balcony. Indulge in top-tier building amenities including: indoor pool, sauna, and a fully equipped gym. PRIME LOCATION...mere steps to West Block shops/restaurants, our vibrant River Valley, future Valley Line West LRT, and easy access to downtown, U of A and MacEwan...it's where urban living meets classic neighbourhood charm!

Built in 1969

Essential Information

MLS® # E4434282

Price \$127,400



Bedrooms	1
Bathrooms	1.00
Full Baths	1
Square Footage	670
Acres	0.00
Year Built	1969
Type	Condo / Townhouse
Sub-Type	Apartment High Rise
Style	Single Level Apartment
Status	Active

Community Information

Address	401 13910 Stony Plain Road
Area	Edmonton
Subdivision	Glenora
City	Edmonton
County	ALBERTA
Province	AB
Postal Code	T5N 3R2

Amenities

Amenities	Exercise Room, Intercom, No Smoking Home, Pool-Indoor, Recreation Room/Centre, Sauna; Swirlpool; Steam, Security Door, Social Rooms, Storage-In-Suite
Parking	See Remarks
Has Pool	Yes

Interior

Appliances	Dishwasher-Built-In, Microwave Hood Fan, Refrigerator, Stove-Electric, Window Coverings, See Remarks
Heating	Hot Water, Natural Gas
# of Stories	18
Stories	1
Has Basement	Yes
Basement	None, No Basement

Exterior

Exterior	Concrete, Brick
Exterior Features	Public Transportation, Schools, Shopping Nearby, See Remarks

Roof	Tar & Gravel
Construction	Concrete, Brick
Foundation	Concrete Perimeter

Additional Information

Date Listed	May 2nd, 2025
Days on Market	8
Zoning	Zone 11
Condo Fee	\$651

DATA IS DEEMED RELIABLE BUT IS NOT GUARANTEED ACCURATE BY THE REALTORS® ASSOCIATION OF EDMONTON. COPYRIGHT 2025 BY THE REALTORS® ASSOCIATION OF EDMONTON. ALL RIGHTS RESERVED.Trademarks are owned or controlled by the Canadian Real Estate Association (CREA) and identify real estate professionals who are members of CREA (REALTOR®, REALTORS®) and/or the quality of services they provide (MLS®, Multiple Listing Service®)

Listing information last updated on May 9th, 2025 at 11:17pm MDT