

\$560,000 - 7626 154 Street, Edmonton

MLS® #E4434111

\$560,000

3 Bedroom, 2.00 Bathroom, 1,305 sqft

Single Family on 0.00 Acres

Rio Terrace, Edmonton, AB

Terrific location on a quiet street only steps to Rio Terrace School. Large lot with West facing yard. Very well kept home. Walk out from third level to yard. Fireplace. Vinyl windows. 3 bedrooms upstairs. Family room and laundry room on 3rd level. Terrific family home. 24 ft x 22 ft detached garage. For more details please visit the REALTOR®'s Website.

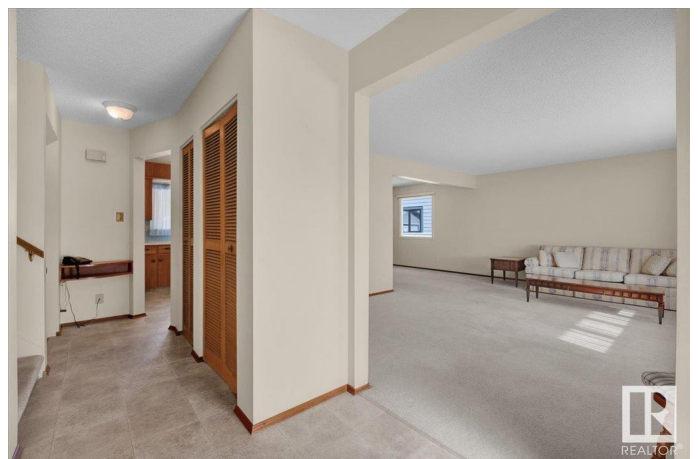
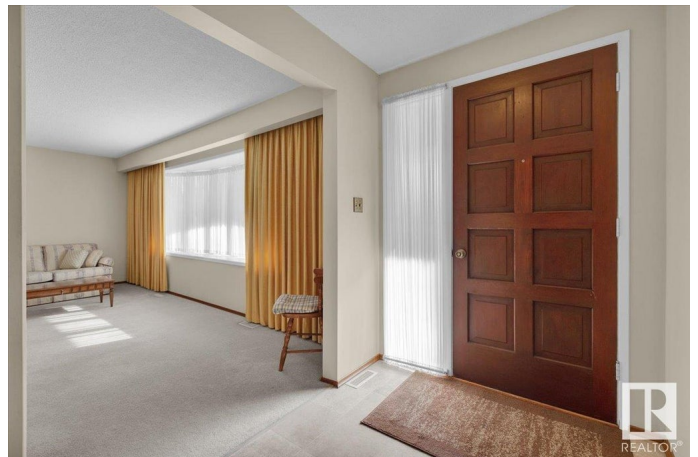
Built in 1969

Essential Information

| | |
|----------------|------------------------|
| MLS® # | E4434111 |
| Price | \$560,000 |
| Bedrooms | 3 |
| Bathrooms | 2.00 |
| Full Baths | 2 |
| Square Footage | 1,305 |
| Acres | 0.00 |
| Year Built | 1969 |
| Type | Single Family |
| Sub-Type | Detached Single Family |
| Style | 4 Level Split |
| Status | Active |

Community Information

| | |
|---------|-----------------|
| Address | 7626 154 Street |
| Area | Edmonton |



| | |
|-------------|-------------|
| Subdivision | Rio Terrace |
| City | Edmonton |
| County | ALBERTA |
| Province | AB |
| Postal Code | T5R 1R8 |

Amenities

| | |
|-----------|-----------------------------|
| Amenities | Patio, Wet Bar, See Remarks |
| Parking | Double Garage Detached |

Interior

| | |
|--------------|--|
| Appliances | Dishwasher-Built-In, Dryer, Refrigerator, Stove-Electric, Washer, Window Coverings |
| Heating | Forced Air-1, Natural Gas |
| Fireplace | Yes |
| Fireplaces | Brick Facing |
| Stories | 3 |
| Has Basement | Yes |
| Basement | Full, Finished |

Exterior

| | |
|-------------------|--|
| Exterior | Wood, Brick, Vinyl |
| Exterior Features | Fenced, Flat Site, Landscaped, Playground Nearby, Public Transportation, Schools, Shopping Nearby, See Remarks |
| Roof | Asphalt Shingles |
| Construction | Wood, Brick, Vinyl |
| Foundation | Concrete Perimeter |

School Information

| | |
|------------|----------------------------|
| Elementary | Patricia Heights/Our Lady. |
| Middle | Laurier/H.E. Beriault |
| High | Jasper Place/St. Oscar |

Additional Information

| | |
|----------------|---------------|
| Date Listed | May 2nd, 2025 |
| Days on Market | 7 |
| Zoning | Zone 22 |

DATA IS DEEMED RELIABLE BUT IS NOT GUARANTEED ACCURATE BY THE REALTORS® ASSOCIATION OF EDMONTON. COPYRIGHT 2025 BY THE REALTORS® ASSOCIATION OF EDMONTON. ALL RIGHTS RESERVED. Trademarks are owned or controlled by the Canadian Real Estate Association (CREA) and identify real

estate professionals who are members of CREA (REALTOR®®, REALTORS®®) and/or the quality of services they provide (MLS®®, Multiple Listing Service®®)

Listing information last updated on May 9th, 2025 at 9:02pm MDT