

\$389,000 - 17 804 Welsh Drive, Edmonton

MLS® #E4433540

\$389,000

3 Bedroom, 2.50 Bathroom, 1,471 sqft

Condo / Townhouse on 0.00 Acres

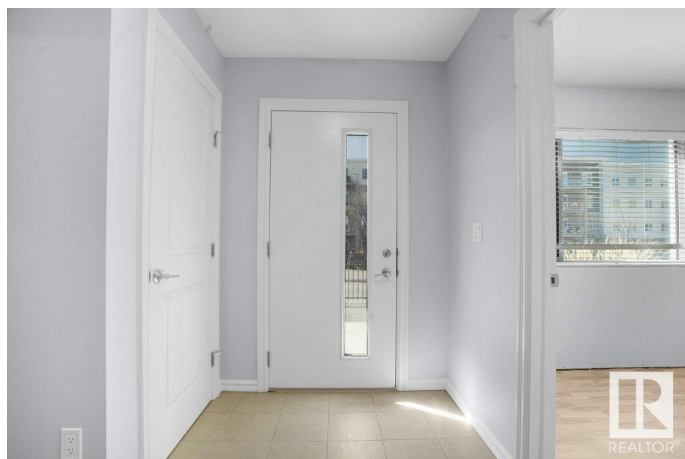
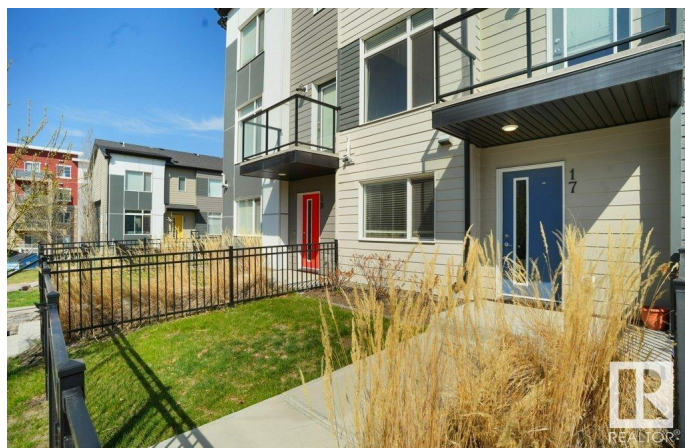
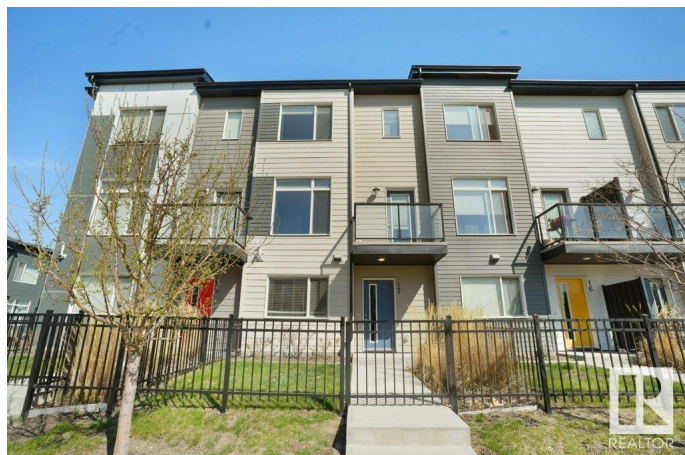
Walker, Edmonton, AB

Well maintained 3 bedroom, 2.5 bathroom townhouse with Double attached garage in Walker lake. The main floor has a bright open living room with big windows and a spacious dining room. The kitchen has quartz countertop, large island, tiled backsplash and stainless steel appliances. The hardwood flooring runs throughout the main floor. It has a balcony, to enjoy summer barbeques & relaxing. The upper floor has master bedroom with ensuite bath, two additional bedrooms and a full bathroom. The home is conveniently located within walking distance to playground, park and walking paths. Enjoy the convenience of the close proximity to School, shopping Centre, public transportation and easy access to highway.

Built in 2017

Essential Information

MLS® #	E4433540
Price	\$389,000
Bedrooms	3
Bathrooms	2.50
Full Baths	2
Half Baths	1
Square Footage	1,471
Acres	0.00



Year Built	2017
Type	Condo / Townhouse
Sub-Type	Townhouse
Style	3 Storey
Status	Active

Community Information

Address	17 804 Welsh Drive
Area	Edmonton
Subdivision	Walker
City	Edmonton
County	ALBERTA
Province	AB
Postal Code	T6X 1Y8

Amenities

Amenities	Parking-Visitor
Parking	Double Garage Attached

Interior

Interior Features	ensuite bathroom
Appliances	Dishwasher-Built-In, Dryer, Garage Opener, Microwave Hood Fan, Refrigerator, Stove-Electric, Washer, Window Coverings
Heating	Forced Air-1, Natural Gas
Stories	2
Has Basement	Yes
Basement	None, No Basement

Exterior

Exterior	Wood, Vinyl
Exterior Features	Landscaped, Playground Nearby, Public Transportation, Schools, Shopping Nearby
Roof	Asphalt Shingles
Construction	Wood, Vinyl
Foundation	Concrete Perimeter

Additional Information

Date Listed	April 30th, 2025
Days on Market	10

Zoning	Zone 53
Condo Fee	\$171

DATA IS DEEMED RELIABLE BUT IS NOT GUARANTEED ACCURATE BY THE REALTORS® ASSOCIATION OF EDMONTON. COPYRIGHT 2025 BY THE REALTORS® ASSOCIATION OF EDMONTON. ALL RIGHTS RESERVED. Trademarks are owned or controlled by the Canadian Real Estate Association (CREA) and identify real estate professionals who are members of CREA (REALTOR®, REALTORS®) and/or the quality of services they provide (MLS®, Multiple Listing Service®)

Listing information last updated on May 10th, 2025 at 9:31am MDT