

\$315,000 - Twp 551 Range Road 260, Rural Sturgeon County

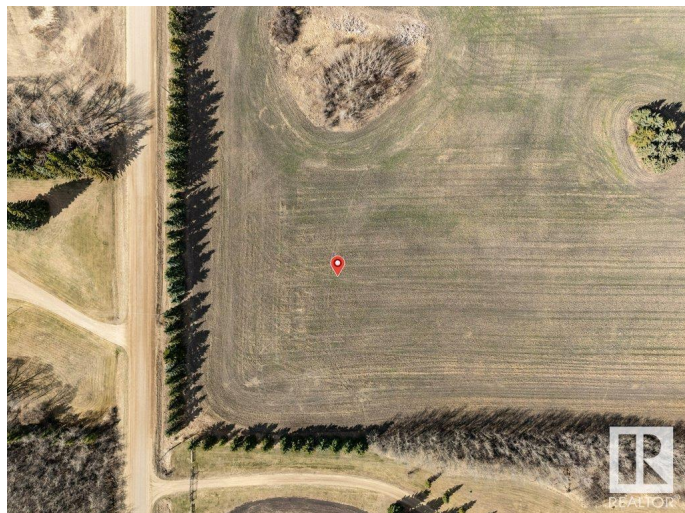
MLS® #E4433093

\$315,000

0 Bedroom, 0.00 Bathroom,
Rural on 2.47 Acres

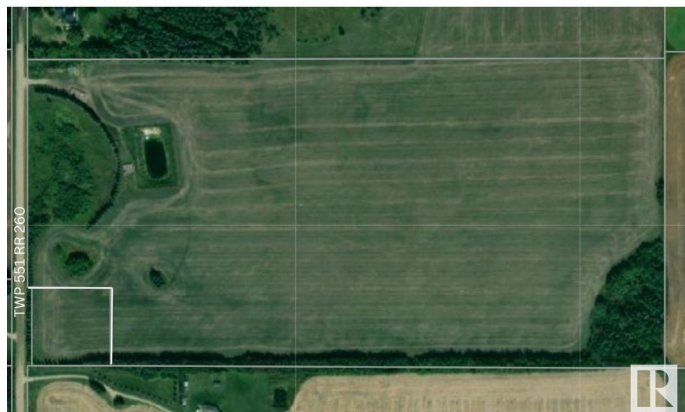
None, Rural Sturgeon County, AB

Build your dream home on this private 2.47 acre parcel of land! Just 10 minutes from St. Albert just off Hwy 37. Not in a sub-division. Large trees line the West and South perimeter with the rest of the property cleared.



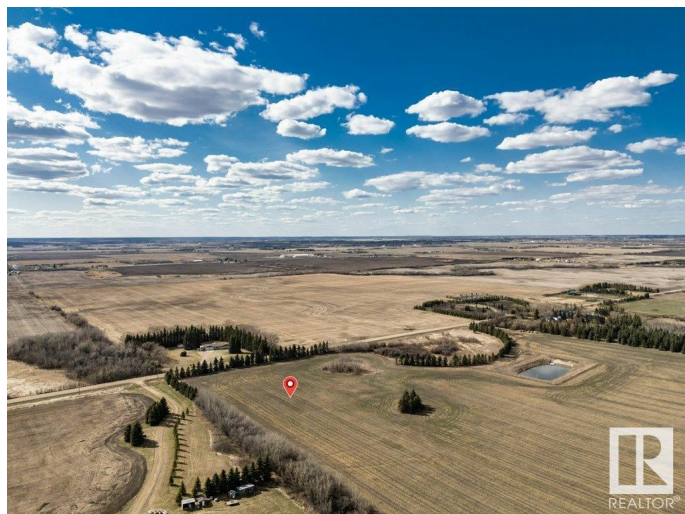
Essential Information

| | |
|-----------|-----------------|
| MLS® # | E4433093 |
| Price | \$315,000 |
| Bathrooms | 0.00 |
| Acres | 2.47 |
| Type | Rural |
| Sub-Type | Vacant Lot/Land |
| Status | Active |



Community Information

| | |
|-------------|------------------------|
| Address | Twp 551 Range Road 260 |
| Area | Rural Sturgeon County |
| Subdivision | None |
| City | Rural Sturgeon County |
| County | ALBERTA |
| Province | AB |
| Postal Code | T8R 0T4 |



Exterior

Exterior Features Flat Site, Private Setting, See Remarks

Additional Information

Date Listed April 27th, 2025
Days on Market 51
Zoning Zone 70

DATA IS DEEMED RELIABLE BUT IS NOT GUARANTEED ACCURATE BY THE REALTORS® ASSOCIATION OF EDMONTON. COPYRIGHT 2025 BY THE REALTORS® ASSOCIATION OF EDMONTON. ALL RIGHTS RESERVED.Trademarks are owned or controlled by the Canadian Real Estate Association (CREA) and identify real estate professionals who are members of CREA (REALTOR®, REALTORS®) and/or the quality of services they provide (MLS®, Multiple Listing Service®)
Listing information last updated on June 16th, 2025 at 9:31pm MDT