

# **\$849,900 - 278 52152 Rge Road 225, Rural Strathcona County**

MLS® #E4432782

**\$849,900**

3 Bedroom, 3.00 Bathroom, 2,356 sqft

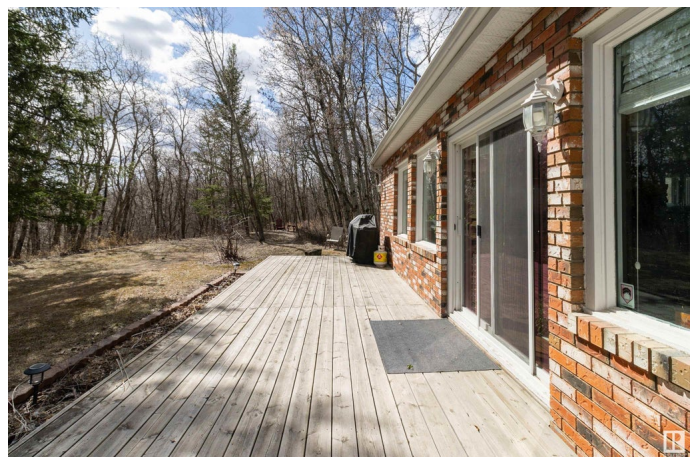
Rural on 5.08 Acres

Greenwood Estates (Strathcona), Rural Strathcona County, AB

Upgraded Chalet-Style Home in Private Treed 5 acre Setting – Close to Town This beautifully upgraded chalet-style home offers the perfect blend of tranquility and convenience, set on a private treed lot backing a 20-acre reserve with walking trails. Enjoy outdoor living with decks on both sides, a hot tub, and a firepit area. Inside, vaulted ceilings and large windows fill the great room with light, anchored by a striking feature fireplace. The upgraded kitchen boasts quartz countertops and stainless appliances, complemented by hardwood and laminate flooring throughout. The main floor features a second living/TV room, a third bedroom, an updated full bath, and a laundry room. Upstairs, the spacious master suite includes a 4-piece ensuite, along with a second bedroom and another full bath. A hallway overlooks the spectacular great room below, enhancing the home's open feel. Additional perks include a sunroom, an oversized double garage, and city-style water/sewer services—all just minutes from town.

Built in 1974

## **Essential Information**



MLS® #	E4432782
Price	\$849,900
Bedrooms	3
Bathrooms	3.00
Full Baths	3
Square Footage	2,356
Acres	5.08
Year Built	1974
Type	Rural
Sub-Type	Detached Single Family
Style	2 Storey
Status	Active

### Community Information

Address	278 52152 Rge Road 225
Area	Rural Strathcona County
Subdivision	Greenwood Estates (Strathcona)
City	Rural Strathcona County
County	ALBERTA
Province	AB
Postal Code	T8C 1C6

### Amenities

Features	Air Conditioner, Deck, Fire Pit
Parking Spaces	10

### Interior

Interior Features	ensuite bathroom
Heating	Forced Air-1, Natural Gas
Stories	2
Has Basement	Yes
Basement	Partial, Unfinished

### Exterior

Exterior	Wood
Exterior Features	Landscaped, Park/Reserve, Private Setting, Treed Lot
Construction	Wood
Foundation	Concrete Perimeter

### Additional Information

Date Listed April 25th, 2025

Days on Market 5

Zoning Zone 80

DATA IS DEEMED RELIABLE BUT IS NOT GUARANTEED ACCURATE BY THE REALTORS® ASSOCIATION OF EDMONTON. COPYRIGHT 2025 BY THE REALTORS® ASSOCIATION OF EDMONTON. ALL RIGHTS RESERVED. Trademarks are owned or controlled by the Canadian Real Estate Association (CREA) and identify real estate professionals who are members of CREA (REALTOR®, REALTORS®) and/or the quality of services they provide (MLS®, Multiple Listing Service®)

Listing information last updated on April 30th, 2025 at 8:17am MDT