

\$164,900 - 111 3610 43 Ave Avenue, Edmonton

MLS® #E4432148

\$164,900

3 Bedroom, 2.00 Bathroom, 1,023 sqft
Condo / Townhouse on 0.00 Acres

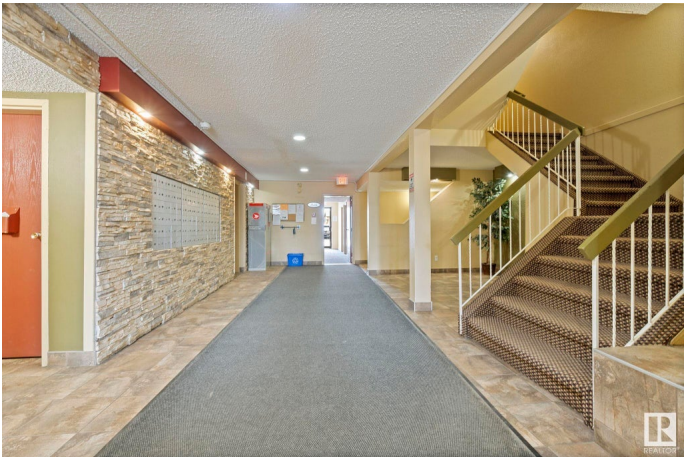
Kiniski Gardens, Edmonton, AB

Welcome to this beautifully renovated (2023) 3 bedroom, 2 bathroom ground-level unit offering 1,022 sq ft of comfortable living space. Enjoy the ease of direct main-level accessâ€”no waiting for elevatorsâ€”and the convenience of being the closest unit just steps from the laundry room (one laundry room per floor). Perfect for families, this home features a large living and dining area, an inviting patio, and access to a partially fenced green space that's great for kids and small pets. Located in a well-maintained building with an assigned parking stall (with power), this unit is close to everything: shopping, parks, recreation centres, golf, and schools of all levels. Quick access to major routes like the Whitemud and Anthony Henday make commuting a breeze. A rare find with unbeatable value!

Built in 1982

Essential Information

| | |
|----------------|-----------|
| MLS® # | E4432148 |
| Price | \$164,900 |
| Bedrooms | 3 |
| Bathrooms | 2.00 |
| Full Baths | 2 |
| Square Footage | 1,023 |
| Acres | 0.00 |



| | |
|------------|------------------------|
| Year Built | 1982 |
| Type | Condo / Townhouse |
| Sub-Type | Lowrise Apartment |
| Style | Single Level Apartment |
| Status | Active |

Community Information

| | |
|-------------|------------------------|
| Address | 111 3610 43 Ave Avenue |
| Area | Edmonton |
| Subdivision | Kiniski Gardens |
| City | Edmonton |
| County | ALBERTA |
| Province | AB |
| Postal Code | T6L 5T2 |

Amenities

| | |
|-----------|----------------------------------------------------------|
| Amenities | Detectors Smoke, Hot Water Natural Gas, Parking-Plug-Ins |
| Parking | Stall |

Interior

| | |
|--------------|-----------------------------------------------------------------------------------------------|
| Appliances | Dishwasher-Built-In, Fan-Ceiling, Hood Fan, Refrigerator, Stove-Electric, Curtains and Blinds |
| Heating | Baseboard, Water |
| # of Stories | 4 |
| Stories | 1 |
| Has Basement | Yes |
| Basement | None, No Basement |

Exterior

| | |
|-------------------|-----------------------------------------------------------------------|
| Exterior | Wood, Stucco |
| Exterior Features | Golf Nearby, Playground Nearby, Schools, Shopping Nearby, See Remarks |
| Roof | Flat, Tar & Gravel |
| Construction | Wood, Stucco |
| Foundation | Concrete Perimeter |

School Information

| | |
|------------|------------------|
| Elementary | Julia Kiniski |
| Middle | Thelma Chalifoux |

High

J Percy Page

Additional Information

Date Listed April 23rd, 2025

Days on Market 7

Zoning Zone 29

Condo Fee \$483

DATA IS DEEMED RELIABLE BUT IS NOT GUARANTEED ACCURATE BY THE REALTORS® ASSOCIATION OF EDMONTON. COPYRIGHT 2025 BY THE REALTORS® ASSOCIATION OF EDMONTON. ALL RIGHTS RESERVED. Trademarks are owned or controlled by the Canadian Real Estate Association (CREA) and identify real estate professionals who are members of CREA (REALTOR®, REALTORS®) and/or the quality of services they provide (MLS®, Multiple Listing Service®)

Listing information last updated on April 30th, 2025 at 6:47am MDT