

\$384,900 - 11025 153a Street, Edmonton

MLS® #E4431199

\$384,900

4 Bedroom, 2.00 Bathroom, 1,058 sqft

Single Family on 0.00 Acres

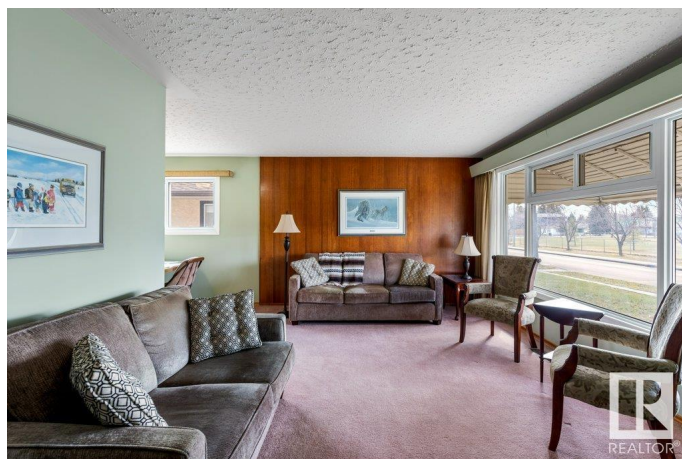
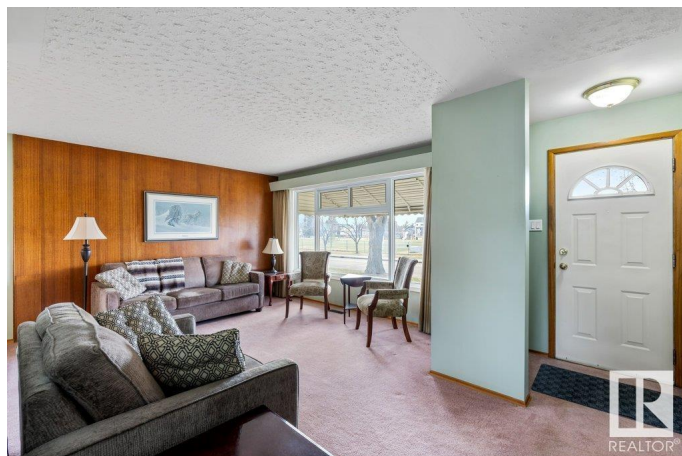
High Park (Edmonton), Edmonton, AB

Welcome to this turn-key bungalow in the quiet, convenient High Park neighbourhood. Nestled on a tree-lined street across from a park, this 4-bedroom, 2-bath home has plenty of cozy charm. The main floor is flooded with natural light—perfect for everyday living or entertaining. The kitchen boasts full-height cabinetry, a tiled backsplash, ample counter space and dinette. Three spacious bedrooms and 4-piece bath complete the main level. Downstairs, the fully finished basement offers one more bedroom, a large family room, a 3-piece bath, and laundry area with storage. Enjoy the backyard with concrete patio, space for a vegetable garden and double detached garage. This home awaits your personal touch!

Built in 1959

Essential Information

MLS® #	E4431199
Price	\$384,900
Bedrooms	4
Bathrooms	2.00
Full Baths	2
Square Footage	1,058
Acres	0.00
Year Built	1959
Type	Single Family



Sub-Type	Detached Single Family
Style	Bungalow
Status	Active

Community Information

Address	11025 153a Street
Area	Edmonton
Subdivision	High Park (Edmonton)
City	Edmonton
County	ALBERTA
Province	AB
Postal Code	T5P 2E7

Amenities

Amenities	See Remarks
Parking	Double Garage Detached

Interior

Appliances	Dishwasher-Built-In, Dryer, Garage Control, Garage Opener, Oven-Microwave, Stove-Electric, Washer, Refrigerators-Two
Heating	Forced Air-1, Natural Gas
Stories	2
Has Basement	Yes
Basement	Full, Finished

Exterior

Exterior	Wood, Stucco, Vinyl
Exterior Features	Back Lane, Fenced, Flat Site, Landscaped, Playground Nearby, Public Transportation, Schools, Shopping Nearby, See Remarks
Roof	Asphalt Shingles
Construction	Wood, Stucco, Vinyl
Foundation	Concrete Perimeter

Additional Information

Date Listed	April 16th, 2025
Days on Market	14
Zoning	Zone 21

DATA IS DEEMED RELIABLE BUT IS NOT GUARANTEED ACCURATE BY THE REALTORS® ASSOCIATION OF EDMONTON. COPYRIGHT 2025 BY THE REALTORS® ASSOCIATION OF EDMONTON. ALL RIGHTS RESERVED. Trademarks are owned or controlled by the Canadian Real Estate Association (CREA) and identify real

estate professionals who are members of CREA (REALTOR®®, REALTORS®®) and/or the quality of services they provide (MLS®®, Multiple Listing Service®®)

Listing information last updated on April 30th, 2025 at 12:47pm MDT