

\$799,900 - 10068 90 Avenue, Edmonton

MLS® #E4430741

\$799,900

1 Bedroom, 0.00 Bathroom, 998 sqft
Single Family on 0.00 Acres

Strathcona, Edmonton, AB

Endless Potential with Breathtaking Views!
Rare opportunity to own a lot in one of the city's most sought-after locations. This 32 ft x 131 ft property offers the perfect canvas to build your dream home, with unobstructed views of downtown, the iconic Walterdale Bridge, and the historic Rosedale Water Treatment Plant. Nestled in a prime neighborhood, lots like this don't come up often—don't miss your chance to create something truly special.

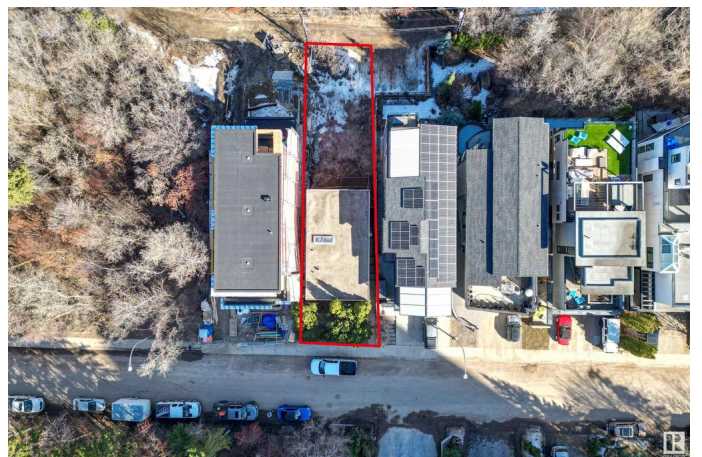
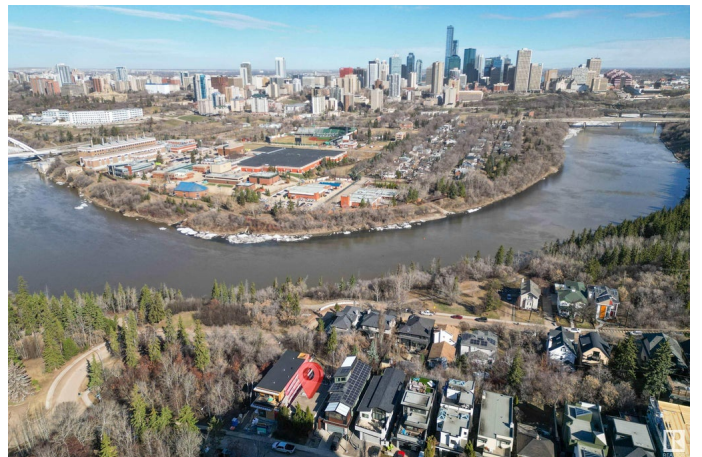
Built in 1963

Essential Information

MLS® #	E4430741
Price	\$799,900
Bedrooms	1
Bathrooms	0.00
Square Footage	998
Acres	0.00
Year Built	1963
Type	Single Family
Sub-Type	Detached Single Family
Style	2 Storey
Status	Active

Community Information

Address 10068 90 Avenue



Area	Edmonton
Subdivision	Strathcona
City	Edmonton
County	ALBERTA
Province	AB
Postal Code	T6E 4X1

Amenities

Amenities	See Remarks
Parking	Front/Rear Drive Access

Interior

Appliances	None
Heating	Forced Air-1, Natural Gas
Stories	2
Has Basement	Yes
Basement	Full, Unfinished

Exterior

Exterior	Wood, Brick, Stucco
Exterior Features	Golf Nearby, Hillside, Park/Reserve, Ravine View, River Valley View, Schools, Shopping Nearby, Ski Hill Nearby, Sloping Lot, View Downtown, See Remarks
Roof	Tar & Gravel
Construction	Wood, Brick, Stucco
Foundation	Concrete Perimeter

Additional Information

Date Listed	April 14th, 2025
Days on Market	131
Zoning	Zone 15

DATA IS DEEMED RELIABLE BUT IS NOT GUARANTEED ACCURATE BY THE REALTORS® ASSOCIATION OF EDMONTON. COPYRIGHT 2025 BY THE REALTORS® ASSOCIATION OF EDMONTON. ALL RIGHTS RESERVED. Trademarks are owned or controlled by the Canadian Real Estate Association (CREA) and identify real estate professionals who are members of CREA (REALTOR®, REALTORS®) and/or the quality of services they provide (MLS®, Multiple Listing Service®)

Listing information last updated on August 23rd, 2025 at 5:47pm MDT