

\$267,888 - 116 603 Youville Drive, Edmonton

MLS® #E4428549

\$267,888

3 Bedroom, 1.50 Bathroom, 1,251 sqft
Condo / Townhouse on 0.00 Acres

Tawa, Edmonton, AB

Welcome to this well-maintained 3-bedroom, 1.5-bathroom townhome in the desirable Parkside community. Perfectly situated for convenience, this home is just a short walk to schools, shopping, and the Grey Nuns Hospital, with a beautiful city park right next door, making outdoor activities effortless. Backing onto a private community playground, this home offers a safe and fun space for kids—just steps from your back door. Enjoy the ease of two assigned parking stalls right outside your front door, along with a handy storage room attached to the front porch. With a partially finished basement, this townhome provides extra space to grow, making it an excellent choice for first-time buyers, young families, or anyone looking for a comfortable, low-maintenance home in a fantastic location. Don't miss this opportunity!

Built in 1993

Essential Information

MLS® #	E4428549
Price	\$267,888
Bedrooms	3
Bathrooms	1.50
Full Baths	1
Half Baths	1
Square Footage	1,251



Acres 0.00
 Year Built 1993
 Type Condo / Townhouse
 Sub-Type Townhouse
 Style 2 Storey
 Status Active

Community Information

Address 116 603 Youville Drive
 Area Edmonton
 Subdivision Tawa
 City Edmonton
 County ALBERTA
 Province AB
 Postal Code T6L 6V8

Amenities

Amenities Deck
 Parking Spaces 2
 Parking 2 Outdoor Stalls

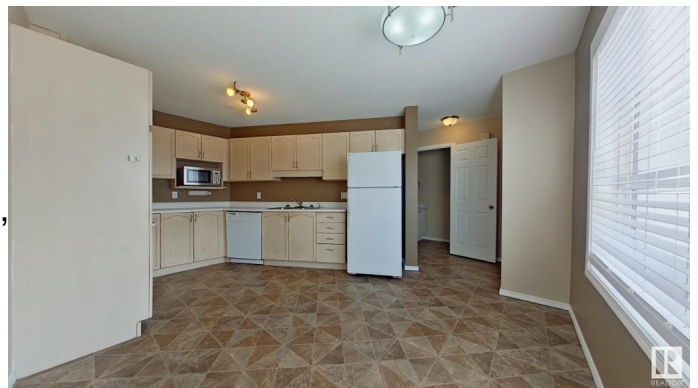
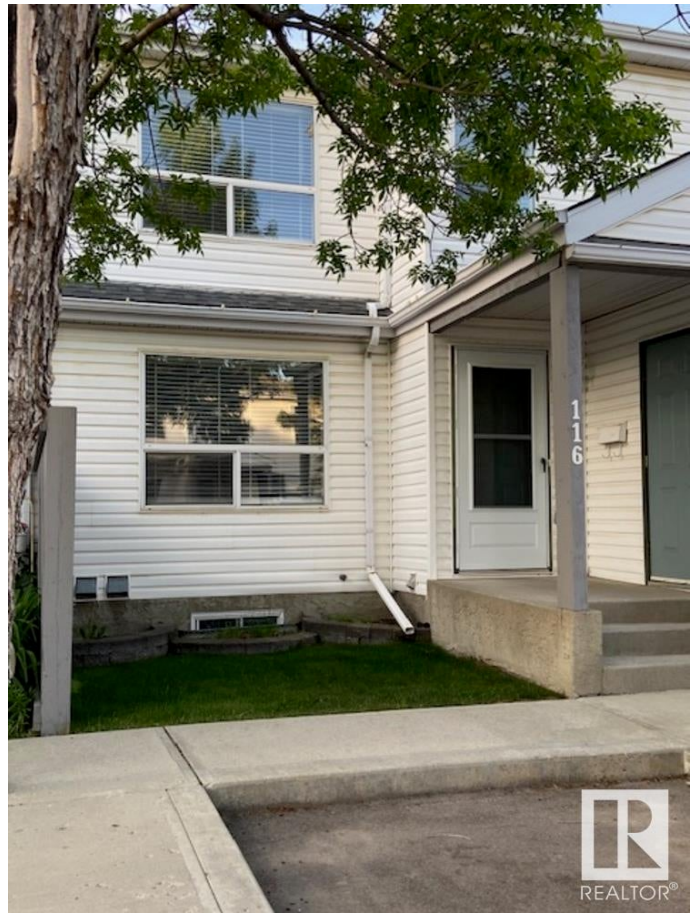
Interior

Appliances Dishwasher-Built-In, Dryer, Window Coverings
 Heating Forced Air-1, Natural Gas
 Fireplace Yes
 Fireplaces Tile Surround
 Stories 2
 Has Basement Yes
 Basement Full, Partially Finished

Exterior

Exterior Wood, Vinyl
 Exterior Features Backs Onto Park/Trees, Landscaped, Playground Nearby, Schools, Shopping Nearby
 Roof Asphalt Shingles
 Construction Wood, Vinyl
 Foundation Concrete Perimeter

Additional Information



Date Listed	April 2nd, 2025
Days on Market	76
Zoning	Zone 29
Condo Fee	\$306

DATA IS DEEMED RELIABLE BUT IS NOT GUARANTEED ACCURATE BY THE REALTORS® ASSOCIATION OF EDMONTON. COPYRIGHT 2025 BY THE REALTORS® ASSOCIATION OF EDMONTON. ALL RIGHTS RESERVED. Trademarks are owned or controlled by the Canadian Real Estate Association (CREA) and identify real estate professionals who are members of CREA (REALTOR®, REALTORS®) and/or the quality of services they provide (MLS®, Multiple Listing Service®)

Listing information last updated on June 17th, 2025 at 3:32am MDT