

\$1,357,700 - 26022 Twp Rd 511, Rural Parkland County

MLS® #E4418417

\$1,357,700

4 Bedroom, 3.50 Bathroom, 3,562 sqft

Rural on 13.87 Acres

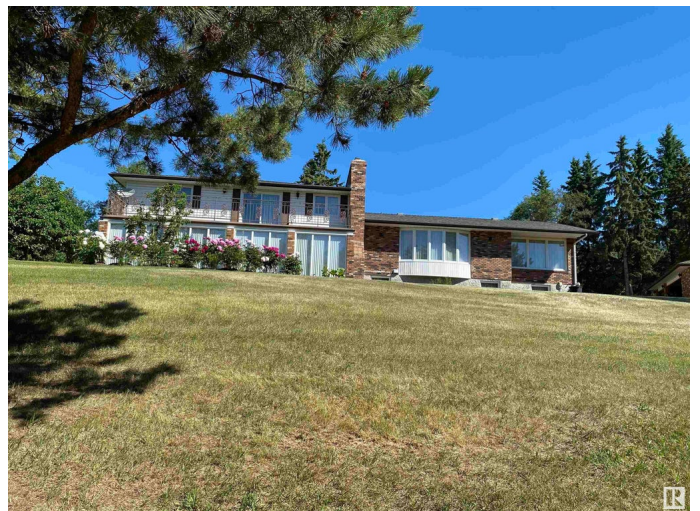
None, Rural Parkland County, AB

Welcome to this breathtaking home! As you drive through the gated and treed entrance, which opens to a stunning view of a Hallmark home on top of a hill, you will find this exceptional 4-level split, offering 3,562 sq. ft. of meticulously designed living space nestled on sprawling 13.87-acres, perfectly positioned to provide both privacy and convenience. Featuring 4 spacious bedrooms, 3.5 bathrooms, including luxurious master ensuite, office, sunroom, formal dining room, and 2 living rooms with fireplaces, ensuring comfort and functionality for family or guests. This property offers endless possibilities for outdoor activities, gardening, horses, or future development, while being just a short drive to essential amenities in Devon and West Edmonton (schools less than 10 min away, Costco 15 min, WEM and EIA 20 min). With its unique blend of country living and easy access to nearby conveniences, this beautiful acreage offers the perfect retreat for those seeking space, tranquility and proximity.

Built in 1976

Essential Information

MLS® #	E4418417
Price	\$1,357,700
Bedrooms	4



Bathrooms	3.50
Full Baths	3
Half Baths	1
Square Footage	3,562
Acres	13.87
Year Built	1976
Type	Rural
Sub-Type	Detached Single Family
Style	4 Level Split
Status	Active

Community Information

Address	26022 Twp Rd 511
Area	Rural Parkland County
Subdivision	None
City	Rural Parkland County
County	ALBERTA
Province	AB
Postal Code	T5P 4B7

Amenities

Features	Barbecue-Built-In, Deck, Detectors Smoke, Fire Pit, Hot Tub, Insulation-Upgraded, No Smoking Home, Parking-Extra, R.V. Storage, Sunroom, See Remarks
----------	--

Interior

Interior Features	ensuite bathroom
Heating	Forced Air-1, Natural Gas
Fireplace	Yes
Stories	3
Has Basement	Yes
Basement	Partial, Unfinished

Exterior

Exterior	Wood
Exterior Features	Airport Nearby, Fenced, Golf Nearby, Hillside, Landscaped, Picnic Area, Private Setting, Rolling Land, Schools, Shopping Nearby, Treed Lot, Vegetable Garden, See Remarks
Construction	Wood

Foundation Concrete Perimeter

Additional Information

Date Listed January 17th, 2025

Days on Market 104

Zoning Zone 70

DATA IS DEEMED RELIABLE BUT IS NOT GUARANTEED ACCURATE BY THE REALTORS® ASSOCIATION OF EDMONTON. COPYRIGHT 2025 BY THE REALTORS® ASSOCIATION OF EDMONTON. ALL RIGHTS RESERVED. Trademarks are owned or controlled by the Canadian Real Estate Association (CREA) and identify real estate professionals who are members of CREA (REALTOR®, REALTORS®) and/or the quality of services they provide (MLS®, Multiple Listing Service®)

Listing information last updated on May 1st, 2025 at 1:47am MDT